



INTER
SICHERHEITS
SERVICE

Fireproof Safes









Fireproofness of safes	4
Way of marking ISS safes	8
• Model Offenbach	10
• Model Offenbach - Bieber	12
• Model Stuttgart Vaihingen	14
• Model Düsseldorf Mettmann	16
• Model Solingen	18
• Model Solingen Office	20
• Model Solingen Super	22
• Model Dortmund	24
• Model Karlsruhe	26
• Model Dresden	28
• Model Brüssel	30
• Model Paris	32
• Model Rom	34
• Model London	36
• Model Amsterdam	38
• Model Weimar	40
• Model Leverkusen	42
• Model Leverkusen Super	44
• Model Leverkusen Office	46
• Model Köln	48
• Model Köln Super	50
• Model Köln Office	52
• Model Wuppertal	54
• Model Wuppertal Super	56
• Model Wuppertal Office	58
• Model Wien	60
• Model Wien Super	62
• Model Hamburg	64
• Model Hamburg Super	66
• Model Berlin	68
• Model Berlin Super	70
• Model Prag	72
• Model Oslo	74
• Model Bergen	78
• Model Stockholm	80
• Model Göteborg	84
• Model Kopenhagen	86
• Model Paris - Versailles	90
• Model Helsinki	92
• Model Rom - Romagna	96
• Model Rom - Lido	98
Additional equipment - no extra charge / extra charge	101

Fireproofness of safes







The real and functional fire resistance of safes is one that is confirmed by certificates and appropriate tests. According to European requirements the tests, surveys and certification of fire resistance of safes are carried out in accordance with two standards: **EN 1047-1** and **EN 15659**.

Fire resistance is the ability of safes to meet certain requirements during a fire.

The measure of the fire resistance of safes is the time expressed in minutes, in a simplified way illustrating how long a given safe can protect its contents from extremely severe conditions during a fire and fire action.

Fire resistance class of the safe	Time of exposure to fire	Stored items	Maximum temperature inside the safe	Maximum humidity	Testing the temperature inside the safe during cooling	Drop test
	30 minutes	documents	150° C	✗	✗	✗
	60 minutes	documents	150° C	✗	✗	✗
	60 minutes	documents, securities	150° C	✗	✓	✓
	120 minutes	documents, securities	150° C	✗	✓	✓
	60 minutes	electronic data carriers	30° C	85 %	✓	✓
	120 minutes	electronic data carriers	30° C	85 %	✓	✓

Requirements for fire-resistant safes regulate the two standards **EN 1047-1** and **EN 15659**.

Standard EN 1047-1		Standard EN 15659	
	S 60 P		LFS 30 P
	S 120 P		LFS 60 P
	S 60 DIS		
	S 120 DIS		

The abbreviation P and DIS stands for: P - paper, assuming that the maximum temperature at which the documents retain their properties is 170° C; DIS - data carriers - which are destroyed at temperatures above 50° C.

Standard EN 15659

The light fire resistance defined by the classes **LFS 30 P** and **LFS 60 P** according to the **EN 15659** standard provides the stored property with short-term fire protection - 30 and 60 minutes respectively.

In the case of a fire test (EN 15659) safes are heated in furnace according to temperature curve up to 840° C, respectively in period 30 (LFS30P) and 60 (LFS60P) minutes. This standard doesn't require a drop test and the temperature inside the safe during cooling is not tested.

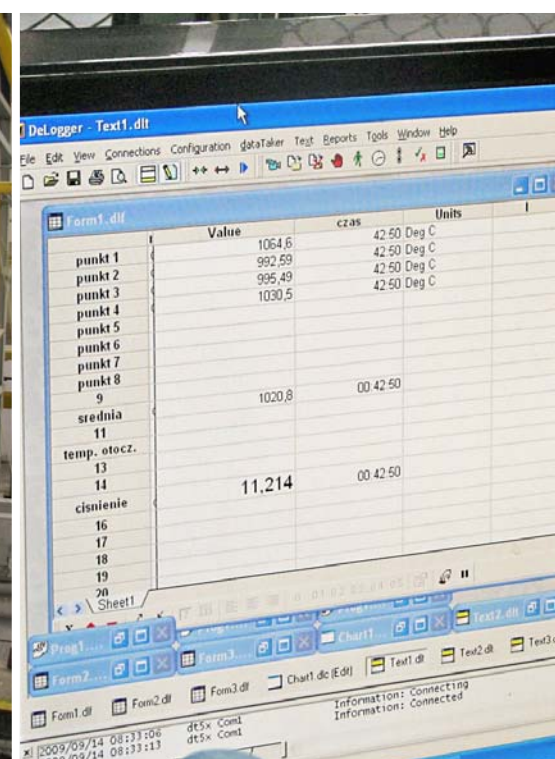
It can be said that this is half of the test to which safes are subjected according to the requirements of **EN 1047-1**.

Standard EN 1047-1

That's why we can talk about "real" fire resistance when products are subjected to tests based on a more restrictive standard, which is the **EN 1047-1**.

Its requirements determine not only the maximum temperature increase inside the safe during heating but also during cooling, additionally also in case of data carrier safes they determine the maximum humidity inside the safe.

The safe is placed inside the furnace and is heated together with furnace to temperature 1090° C at time 60 (class S60P) or 120 (class 120P) minutes



Fireproofness of safes

respectively. At the same time the temperature is measured in critical places inside the safe. In case of safes with fire resistance "P", the acceptable temperature increase inside the safe is by 150° C, "DIS" by 30° C.

The next point is the cooling phase, which is completed when temperature inside the safe is completed on all the sensors.

The **EN 1047-1** standard also requires a positive passing of drop test, which is a simulation of roofs getting caught in fires.

We should remember that fireproof safes, except for high temperatures, are exposed to flooding in the process of firefighting. The short-term protection for this type of threat is a gasket system which, under the influence of high temperatures, seals the safe door.

However, let us keep in mind that fireproof safes are not waterproof ones at the same time.

In conclusion, the **EN 1047-1** standard assumes:

- heating the safe together with furnace up to **1090° C**,
- measuring temperature inside the safe in critical places during heating and cooling, which can be up to 24 hours,
- drop safe from a height of 9 meters,
- in case of safes for storage data carrier - maximum humidity inside the safe up to 85%

The **EN 15659** standard assumes:

- heating the safe together with furnace to temperature **840° C**,
- measuring temperature inside the safe in critical places only during heating



Czas bieżący		85:21		2010-11-28 12:00	
Temperature					
T1	94.3°C	T11	832.8 °C	T21	879.7 °C
T2	94.0°C	T12	837.2 °C	T22	874.9 °C
T3	102.6°C	T13	840.7 °C	T23	875.0 °C
T4	108.7°C	T14	817.8 °C	T24	869.5 °C
T5	79.0°C	T15	822.9 °C	T25	889.6 °C
T6	84.5°C	T16	831.5 °C	T26	881.6 °C
T7	79.2°C	T17	825.2 °C	T27	889.3 °C
T8	149.4°C	T18	819.0 °C		
T9	79.7°C	T19	873.4 °C		
T10	839.5 °C	T20	878.9 °C		



OSLO – safe for storage data carriers with fire resistance S 60 DIS according to EN 1047-1.

Safe after positive test:

- heating up to temperature **1090° C**
- measuring temperature inside the safe in critical places during heating and cooling
- drop from a height of 9 meters
- measurement of air humidity inside



Way of marking ISS safes



sample metric

external dimensions
70 / 70 / 70 cm

 weight
80 kg

 number of drawers
4



categories

- storage of data carriers
- storage of documents
- storage of valuables
- accessories / equipment

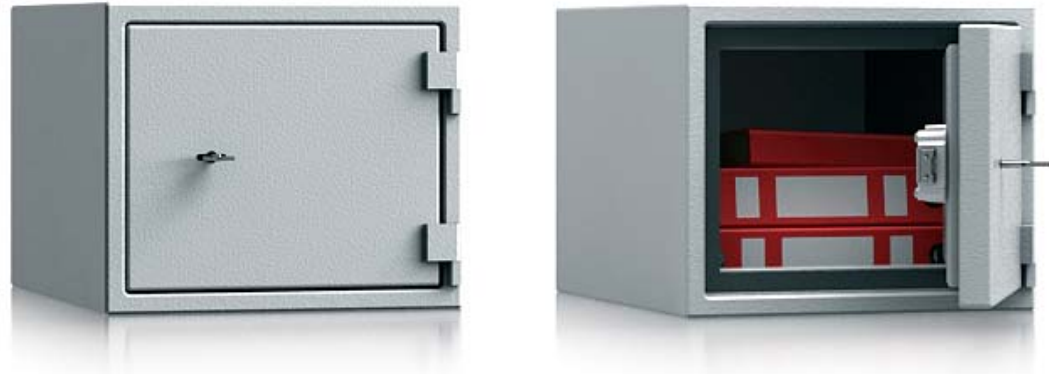
characteristics

- light construction
- light fire protection - class
- fire protection - class
- anti-burglary protection
- door opening angle / hinge
- extremely low weight
- certificates
- type of lock (electronic)
- type of lock (combination)
- type of lock (key)

technical

- modell (name)
- external dimensions
- internal dimensions
- clear door opening dimensions
- mounting holes (number)
- weight
- number of shelves
- number of binders
- volume in liters
- wall thickness
- door thickness

Model Offenbach



Security level: A according to VDMA 24992 - Conditions May '95
Fire rating: Fire-protected safes according to EN 15659 LFS 30 P

Suitable for the storage of:
 office documents, office equipment
 keys

Description
 Offenbach series - furniture safes.

Body: double-walled body (18 mm thick)
Door: double-walled door construction (67 mm thick)
Locking: 2-way locking bolt system - incl. overlapping profile on the hinge side

Standard option
Lock: high security key lock I class VdS with two keys (95 mm)
Hinges: external
Door opening angle: 180°
Mounting holes: 2 holes in the floor and 1 in back wall
Colour: RAL 7035 (light grey)



Model Offenbach

Art. No.	Model	Outer dimensions*			Inner dimensions			Door light		Anchoring		Weight Kg	Shelves Number	Volume Liters
		Height mm	Width mm	Depth mm	Height mm	Width mm	Depth mm	Height mm	Width mm	Bottom number	Backwall number			
32700	Offenbach	180	300	283	147	264	224	112	232	2	1	15	-	9
32701	Offenbach	250	300	383	217	264	324	182	232	2	1	22,2	-	18
32702	Offenbach	200	470	383	167	434	324	132	402	2	1	27,8	-	23
32703	Offenbach	470	200	383	437	164	324	402	132	2	1	27,8	-	23

* excluding hinges, handles and fittings



Body: double-walled body 18 mm thick



Door: double-walled door construction 67 mm thick

Closure options

Standard option

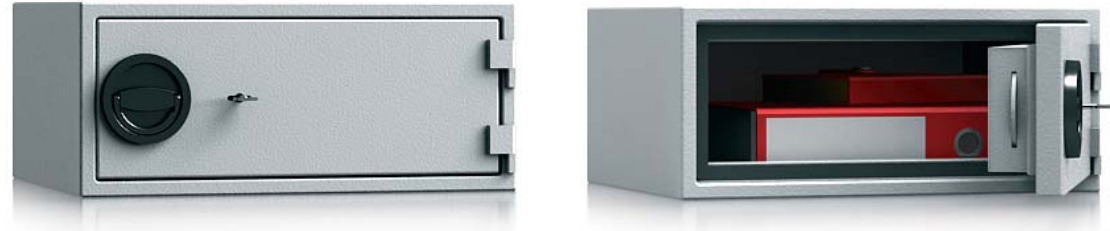


Key lock



All information concerning weight, color and dimensions are noncommittal and subject to errors and changes. Minor deviations are conditional on the production process. Technical changes, modifications and printing errors reserved. Safes may be top-heavy, during commissioning, please exercise appropriate caution in accordance with the installation guide. Pictograms are not technical description of the product.

Model
Offenbach-Bieber



Security level: Class S1 according to EN 14450
Security level: A according to VDMA 24992 - Conditions May '95
Fire rating: Fire-protected safes according to EN 15659 LFS 30 P

Suitable for the storage of:
 office documents, office equipment
 keys

Description
 Offenbach-Bieber series - Furniture safes.

Body: double-walled body (18 mm thick)
Door: double-walled door construction (74 mm thick)
Locking: 2-way locking bolt system - incl. overlapping profile on the hinge side

Standard option
Lock: high security key lock I class VdS with two keys (95 mm)
Boltwork handle: knob, protruding 12 mm
Hinges: external
Door opening angle: 180°
Mounting holes: 2 holes in the floor and 1 in back wall
Colour: RAL 7035 (light grey)



Model
Offenbach-Bieber

Art. No.	Model	Outer dimensions*			Inner dimensions			Door light		Anchoring		Weight	Shelves	Volume
		Height mm	Width mm	Depth mm	Height mm	Width mm	Depth mm	Height mm	Width mm	Bottom number	Backwall number	Kg	Number	Liters
32800	Offenbach-Bieber	200	470	383	167	434	291	132	402	2	1	29,3	-	21
32801	Offenbach-Bieber	470	200	383	437	164	291	402	132	2	1	29,3	-	21

* excluding hinges, handles and fittings



Body: double-walled body 18 mm thick



Door: double-walled door construction 74 mm thick

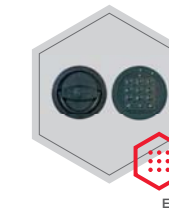
Closure options

Standard option



Key lock

Options available against surcharge



Electronic lock



All information concerning weight, color and dimensions are noncommittal and subject to errors and changes. Minor deviations are conditional on the production process. Technical changes, modifications and printing errors reserved. Safes may be top-heavy, during commissioning, please exercise appropriate caution in accordance with the installation guide. Pictograms are not technical description of the product.

Model
Stuttgart Vaihingen



Security level: Class S1 according to EN 14450
Security level: A according to VDMA 24992 - Conditions May'95
Fire rating: Fire-protected safes according to EN 15659 LFS 30 P

Suitable for the storage of:

- office documents, office equipment
- gun (see additional accessories)
- keys (see additional accessories)

Description
 Series Stuttgart Vaihingen - document safes.

Body: double-walled body (63 mm thick)
Door: multi-walled door construction (78 mm thick)
Locking: 4-way locking bolt system - incl. fix bolts on the hinge side

Standard option
Lock: high security key lock I class VdS with two keys (95 mm)
Boltwork handle: handle, protruding 60 mm
Hinges: external
Door opening angle: 180°
Mounting holes: 2 holes in the floor
Colour: RAL 7035 (light grey)

Model
Stuttgart Vaihingen

Art. No.	Model	Outer dimensions*			Inner dimensions			Door light		Anchoring		Weight Kg	Shelves Number	Files Number	Volume Liters
		Height mm	Width mm	Depth mm	Height mm	Width mm	Depth mm	Height mm	Width mm	Bottom number	Backwall number				
38100	Stuttgart Vaihingen	370	490	455	229	355	293	229	324	2	-	41	1	3	24
38101	Stuttgart Vaihingen	470	380	455	329	245	293	329	214	2	-	40	1	3	24
38102	Stuttgart Vaihingen	470	490	455	329	355	293	329	324	2	-	48	1	4	34
38103	Stuttgart Vaihingen	670	490	455	529	355	293	529	324	2	-	63	1	6	55
38104	Stuttgart Vaihingen	820	490	455	679	355	293	679	324	2	-	72	1	8	71
38105	Stuttgart Vaihingen	1170	700	510	1029	565	348	1029	534	2	-	129	2	21	202
38106	Stuttgart Vaihingen	1520	700	510	1379	565	348	1379	534	2	-	157	3	28	271
38107	Stuttgart Vaihingen	1870	700	510	1729	565	348	1729	534	2	-	188	4	35	340
38108	Stuttgart Vaihingen**	1170	950	510	1029	815	348	1029	784	2	-	156	2	30	292
38109	Stuttgart Vaihingen**	1870	950	510	1729	815	348	1729	784	2	-	220	4	50	490
38110	Stuttgart Vaihingen**	1870	1300	510	1729	1165	348	1729	1134	2	-	293	4	75	701

* excluding hinges, handles and fittings ** 2-door



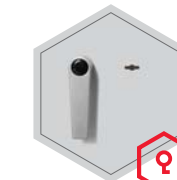
Body: double-walled body (63 mm thick)



Door: multi-walled door construction (78 mm thick)

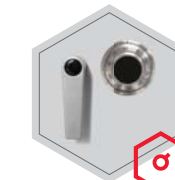
Closure options

Standard option

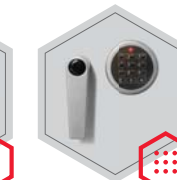


Key lock

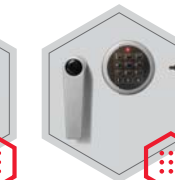
Options available against surcharge



Mechanical code lock

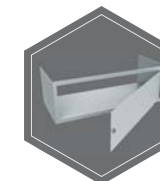


Electronic lock

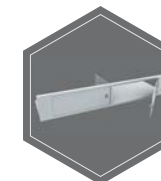


Electronic lock with mechanical emergency (Excl. 38101)

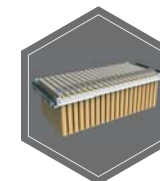
Accessories available against surcharge



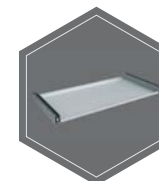
Inner safe



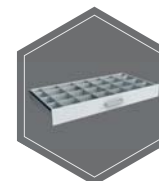
Inner safe with partition wall, 2 - door



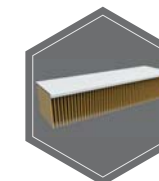
Extensible file frame



Extendable shelf



Extendable drawer for individual arrangement



Shelf for hanging files



All information concerning weight, color and dimensions are noncommittal and subject to errors and changes. Minor deviations are conditional on the production process. Technical changes, modifications and printing errors reserved. Safes may be top-heavy, during commissioning, please exercise appropriate caution in accordance with the installation guide. Pictograms are not technical description of the product.

Model
Düsseldorf Mettmann



Security level: Class S2 according to EN 14450
Security level: B according to VDMA 24992 - Conditions May'95
Fire rating: Fire-protected safes according to EN 15659 LFS 30 P

Suitable for the storage of:

- office documents, office equipment
- gun (see additional accessories)
- keys (see additional accessories)

Description

Series Düsseldorf Mettmann - document safes.

Body: double-walled body (65,5 mm thick)
Door: multi-walled door construction (94 mm thick)
Locking: 4-way locking bolt system - incl. fix bolts on the hinge side

Standard option

Lock: high security key lock I class VdS with two keys (120 mm)
Boltwork handle: handle, protruding 60mm
Hinges: external
Door opening angle: 180°
Mounting holes: 2 holes in the floor
Colour: RAL 7035 (light grey)

Model
Düsseldorf Mettmann

Art. No.	Model	Outer dimensions*			Inner dimensions			Door light		Anchoring		Weight Kg	Shelves Number	Files Number	Volume Liters
		Height mm	Width mm	Depth mm	Height mm	Width mm	Depth mm	Height mm	Width mm	Bottom number	Backwall number				
39200	Düsseldorf Mettmann	375	495	472	229	355	293	229	324	2	-	59	1	3	23
39201	Düsseldorf Mettmann	475	385	472	329	245	293	329	214	2	-	58	1	3	23
39202	Düsseldorf Mettmann	475	495	472	329	355	293	329	324	2	-	68	1	4	34
39203	Düsseldorf Mettmann	675	495	472	529	355	293	529	324	2	-	84	1	6	55
39204	Düsseldorf Mettmann	825	495	472	679	355	293	679	324	2	-	100	1	8	70
39205	Düsseldorf Mettmann	1175	705	527	1029	565	348	1029	534	2	-	178	2	21	202
39206	Düsseldorf Mettmann	1525	705	527	1379	565	348	1379	534	2	-	217	3	28	271
39207	Düsseldorf Mettmann	1875	705	527	1729	565	348	1729	534	2	-	268	4	35	339
39208	Düsseldorf Mettmann**	1175	955	527	1029	815	348	1029	784	2	-	230	2	30	291
39209	Düsseldorf Mettmann**	1875	955	527	1729	815	348	1729	784	2	-	338	4	50	490
39210	Düsseldorf Mettmann**	1875	1305	527	1729	1165	348	1729	1134	2	-	416	4	75	700

* excluding hinges, handles and fittings
 ** 2-door



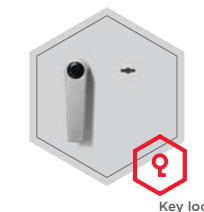
Body: double-walled body (65,5 mm thick)



Door: multi-walled door construction (94 mm thick)

Closure options

Standard option



Key lock

Options available against surcharge



Mechanical code lock

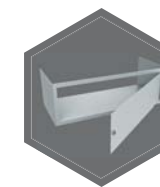


Electronic lock

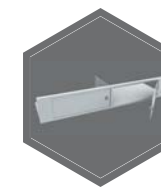


Electronic lock with mechanical emergency (Excl. 39201)

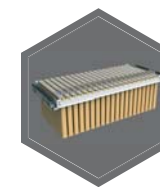
Accessories available against surcharge



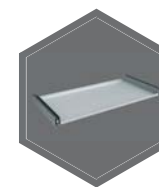
Inner safe



Inner safe with partition wall, 2 - door



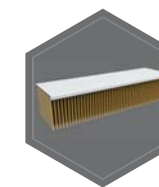
Extensible file frame



Extendable shelf



Extendable drawer for individual arrangement



Shelf for hanging files



All information concerning weight, color and dimensions are noncommittal and subject to errors and changes. Minor deviations are conditional on the production process. Technical changes, modifications and printing errors reserved. Safes may be top-heavy, during commissioning, please exercise appropriate caution in accordance with the installation guide. Pictograms are not technical description of the product.

Model Solingen



Security level: Class S2 according to EN 14450/ VdS 2862
Fire rating: Fire-protected safes according to EN 1047-1 S 60 P

The safe has been approved in accordance with EN 1047-1 in fire class 60 P. The certification was awarded by VdS they have fire and impact tests.

Suitable for the storage of:
 office documents, office equipment

Description
 Series Solingen - the safes with one hour protection from fire S 60 P.

Body: double-walled body (50 mm thick)
Door: multi-walled door construction (95 mm thick)
Locking: 4-way locking bolt system - incl. fix bolts on the hinge side

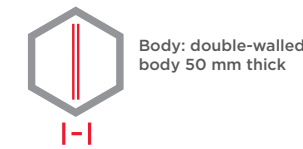
Standard option
Lock: high security key lock I class VdS with two keys (120 mm)
Boltwork handle: handle, protruding 60 mm
Hinges: external
Door opening angle: 180°
Mounting holes: 2 holes in the floor
Colour: RAL 7035 (light grey)



Model Solingen

Art. No.	Model	Outer dimensions*			Inner dimensions			Door light		Anchoring		Weight Kg	Shelves Number	Files Number	Volume Liters
		Height mm	Width mm	Depth mm	Height mm	Width mm	Depth mm	Height mm	Width mm	Bottom number	Backwall number				
39400	Solingen	380	463	427	279	351	295	264	328	2	-	97	1	3**	29
39401	Solingen	440	463	427	339	351	295	324	328	2	-	104	1	4	35
39402	Solingen	615	463	427	515	351	295	499	328	2	-	138	1	6	53
39403	Solingen	775	463	427	674	351	295	659	328	2	-	156	2	8	70
39404	Solingen	1137	704	471	1036	592	339	1021	569	2	-	315	2	21	208
39405	Solingen	1322	704	471	1221	592	339	1206	569	2	-	340	3	23	245
39406	Solingen	1507	704	471	1406	592	339	1391	569	2	-	375	3	28	282

* excluding hinges, handles and fittings ** crosswise

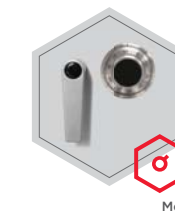


Closure options

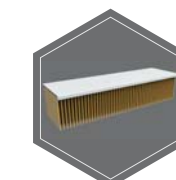
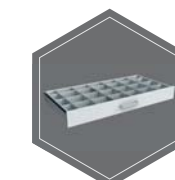
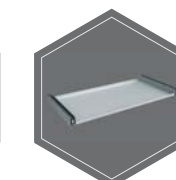
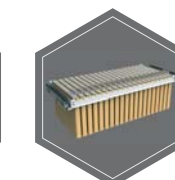
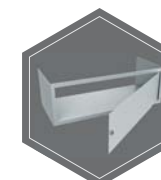
Standard option



Options available against surcharge



Accessories available against surcharge



All information concerning weight, color and dimensions are noncommittal and subject to errors and changes. Minor deviations are conditional on the production process. Technical changes, modifications and printing errors reserved. Safes may be top-heavy, during commissioning, please exercise appropriate caution in accordance with the installation guide. Pictograms are not technical description of the product.

Model
Solingen Office



Security level: Class S2 according to EN 14450/ VdS 2862
Fire rating: Fire-protected safes according to EN 1047-1 S 60 P

The safe has been approved in accordance with EN 1047-1 in fire class 60 P. The certification was awarded by VdS they have fire and impact tests.

Suitable for the storage of:
📁 office documents, office equipment

Description
Series Solingen Office - the safes with one-hour protection from fire S 60 P.

Body: double-walled body (50 mm thick)
Door: multi-walled door construction (95 mm thick)
Locking: 4-way locking bolt system - incl. fix bolts on the hinge side

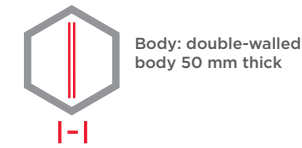
Standard option
Lock: high security key lock I class VdS with two keys (120 mm)
Boltwork handle: handle, protruding 60 mm
Hinges: external
Door opening angle: 180°
Mounting holes: 2 holes in the floor
Colour: RAL 7035 (light grey)



Model
Solingen Office

Art. No.	Model	Outer dimensions*			Inner dimensions			Door light		Anchoring		Weight Kg	Shelves Number	Files Number	Volume Liters
		Height mm	Width mm	Depth mm	Height mm	Width mm	Depth mm	Height mm	Width mm	Bottom number	Backwall number				
39430	Solingen Office **	901	975	459	800	863	303	785	845	2	-	397	1	24	209
39431	Solingen Office **	901	975	559	800	863	403	785	845	2	-	390	1	24	278
39432	Solingen Office **	901	1128	459	800	1016	303	785	998	2	-	398	1	29	246
39434	Solingen Office **	901	1282	459	800	1170	303	785	1152	2	-	439	1	33	284
39437	Solingen Office **	1045	1128	506	944	1016	350	929	998	2	-	456	2	35	336
39438	Solingen Office **	1045	1282	506	944	1170	350	929	1152	2	-	501	2	39	387
39439	Solingen Office **	1189	975	459	1088	863	303	1073	845	2	-	429	2	33	285
39441	Solingen Office **	1189	1128	459	1088	1016	303	1073	998	2	-	477	2	39	335
39443	Solingen Office **	1189	1282	459	1088	1170	303	1073	1152	2	-	526	2	45	386
39444	Solingen Office **	1189	1282	559	1088	1170	403	1073	1152	2	-	569	2	45	513

* excluding hinges, handles and fittings ** 2-door



Closure options

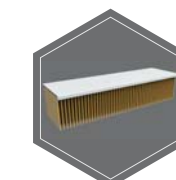
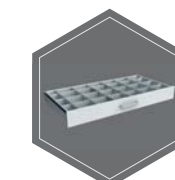
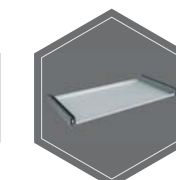
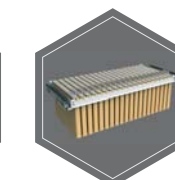
Standard option



Options available against surcharge



Accessories available against surcharge



! All information concerning weight, color and dimensions are noncommittal and subject to errors and changes. Minor deviations are conditional on the production process. Technical changes, modifications and printing errors reserved. Safes may be top-heavy, during commissioning, please exercise appropriate caution in accordance with the installation guide. Pictograms are not technical description of the product.

Model
Solingen Super



Security level: Class S2 according to EN 14450/ VdS 2862
Fire rating: Fire-protected safes according to EN 1047-1 S 60 P

The safe has been approved in accordance with EN 1047-1 in fire class 60 P. The certification was awarded by VdS they have fire and impact tests.

Suitable for the storage of:
📁 office documents, office equipment

Description
Series Solingen Super - the safes with one-hour protection from fire S 60 P.

Body: double-walled body (50 mm thick)
Door: multi-walled door construction (95 mm thick)
Locking: 4-way locking bolt system - incl. fix bolts on the hinge side

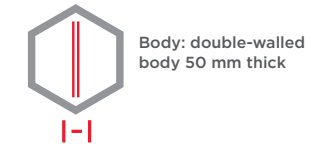
Standard option
Lock: high security key lock I class VdS with two keys (120 mm)
Boltwork handle: handle, protruding 60 mm
Hinges: external
Door opening angle: 180°
Mounting holes: 2 holes in the floor
Colour: RAL 7035 (light grey)



Model
Solingen Super

Art. No.	Model	Outer dimensions*			Inner dimensions			Door light		Anchoring		Weight Kg	Shelves Number	Files Number	Volume Liters
		Height mm	Width mm	Depth mm	Height mm	Width mm	Depth mm	Height mm	Width mm	Bottom number	Backwall number				
39450	Solingen Super	1550	886	545	1449	774	413	1434	751	2	-	501	3	40	463
39452	Solingen Super	1700	886	545	1599	774	413	1584	751	2	-	539	4	40	511
39454	Solingen Super	1884	886	545	1783	774	413	1768	751	2	-	586	4	50	570
39457	Solingen Super **	1884	975	559	1783	863	403	1768	845	2	-	696	4	55	620
39458	Solingen Super **	1884	975	696	1783	863	540	1768	845	2	-	753	4	55	831
39460	Solingen Super **	1884	1128	559	1783	1016	403	1768	998	2	-	785	4	65	730
39461	Solingen Super **	1884	1128	696	1783	1016	540	1768	998	2	-	846	4	65	978
39462	Solingen Super **	1884	1282	459	1783	1170	303	1768	1152	2	-	833	4	75	632
39463	Solingen Super **	1884	1282	559	1783	1170	403	1768	1152	2	-	880	4	75	841
39464	Solingen Super **	1884	1282	696	1783	1170	540	1768	1152	2	-	945	4	75	1126

* excluding hinges, handles and fittings ** 2-door



Closure options

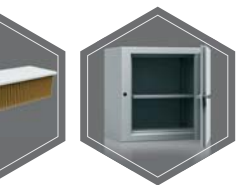
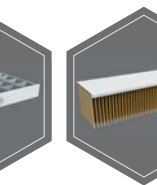
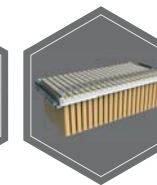
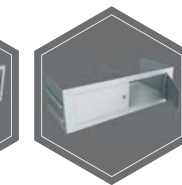
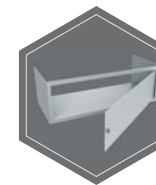
Standard option



Options available against surcharge



Accessories available against surcharge



! All information concerning weight, color and dimensions are noncommittal and subject to errors and changes. Minor deviations are conditional on the production process. Technical changes, modifications and printing errors reserved. Safes may be top-heavy, during commissioning, please exercise appropriate caution in accordance with the installation guide. Pictograms are not technical description of the product.



Security level: Class 0 according to EN 1143-1
Fire rating: Fire-protected safes according to EN 15659 LFS 30 P

Feature - The safe has been approved in accordance with EN 15659 in LFS 30 P fire class.

Suitable for the storage of:

- office documents, office equipment
- valuables

Description

Dortmund series - high security safes with light fire protection.

Body: multi-walled body (62 mm thick)

Door: multi-walled door construction (104 mm thick)

Locking: 4-way locking bolt system - incl. overlapping profile on the hinge side

Standard option

Lock: high security key lock I class VdS with two keys (120 mm)

Boltwork handle: handle, protruding 60mm

Hinges: external

Door opening angle: 180°

Mounting holes: 1 hole in the floor

Colour: RAL 7035 (light grey)

Art. No.	Model	Outer dimensions*			Inner dimensions			Door light		Anchoring		Weight Kg	Shelves Number	Files Number	Volume Liters
		Height mm	Width mm	Depth mm	Height mm	Width mm	Depth mm	Height mm	Width mm	Bottom number	Backwall number				
39500	Dortmund	514	604	400	375	468	230	360	450	1	-	90	1	-	40
39501	Dortmund	606	636	510	467	500	340	452	482	1	-	134	1	6	79
39502	Dortmund	806	636	510	667	500	340	652	482	1	-	170	2	6	113
39503	Dortmund	906	636	510	767	500	340	752	482	1	-	180	2	12	130
39504	Dortmund	1006	636	510	867	500	340	852	482	1	-	191	2	12	147
39505	Dortmund	1206	636	510	1067	500	340	1052	482	1	-	231	3	18	181
39506	Dortmund	1506	806	550	1367	670	380	1352	652	1	-	310	3	24	348
39507	Dortmund	1806	806	550	1667	670	380	1652	652	1	-	356	4	32	424
39508	Dortmund	800	700	550	661	564	380	646	546	1	-	178	2	7	142
39509	Dortmund	1250	700	550	1111	564	380	1096	546	1	-	261	3	21	238
39510	Dortmund	1500	700	550	1361	564	380	1346	546	1	-	306	3	21	292
39511	Dortmund	1950	700	550	1811	564	380	1796	546	1	-	351	4	35	388
39512	Dortmund **	1950	950	550	1811	814	380	1796	796	1	-	510	4	50	560
39513	Dortmund **	1950	1260	550	1811	1124	380	1796	1106	1	-	622	4	75	774
39514	Dortmund **	1806	1486	550	1667	1350	380	1652	1332	1	-	652	4	72	855
39515	Dortmund	1006	836	600	867	700	430	852	682	1	-	264	2	18	261
39516	Dortmund	1256	836	600	1117	700	430	1102	682	1	-	298	3	27	336
39517	Dortmund	1506	836	600	1367	700	430	1352	682	1	-	337	3	27	411
39518	Dortmund	1806	836	600	1667	700	430	1652	682	1	-	389	4	36	502
39519	Dortmund **	1806	1200	600	1667	1064	430	1652	1046	1	-	689	4	56	763

* excluding hinges, handles and fittings ** 2-door



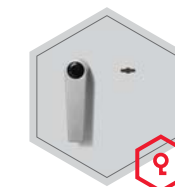
Body: multi-walled body 62 mm thick



Door: multi-walled door construction 104 mm thick

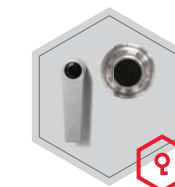
Closure options

Standard option

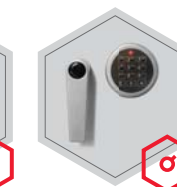


Key lock

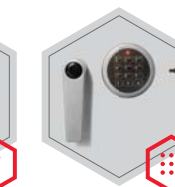
Options available against surcharge



Mechanical code lock



Electronic lock



Electronic lock with mechanical emergency (Excl. 39512)

Accessories available against surcharge



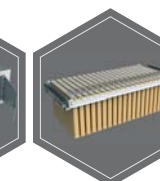
Left door



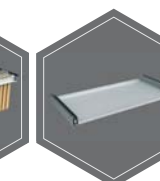
Inner safe (Excl. 39500-39514; 39519)



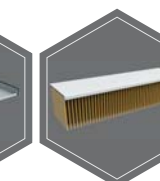
Inner safe with partition wall, 2 - door (Excl. 39500-39511; 39515-39518)



Extensible file frame (Excl. 39500)



Extensible shelf (Excl. 39500)



Shelf for hanging files (Excl. 39500-39504; 39508; 39515)



Extensible drawer for individual arrangement (Excl. 39500)



Alarm system elements/Alarm system (Excl. 39500)



All information concerning weight, color and dimensions are noncommittal and subject to errors and changes. Minor deviations are conditional on the production process. Technical changes, modifications and printing errors reserved. Safes may be top-heavy, during commissioning, please exercise appropriate caution in accordance with the installation guide. Pictograms are not technical description of the product.

Model
Karlsruhe



Security level: Class I according to EN 1143-1
Fire rating: Fire-protected safes according to EN 15659 LFS 30 P

- Suitable for the storage of:
- office documents, office equipment
 - valuables
 - gun (see Karlsruhe-Durlach)

Description
Karlsruhe series - High security safes with light fire - protection.

Body: multi-walled body (65 mm thick)
Door: multi-walled door construction (94 mm thick)
Locking: 4-way locking bolt system - incl. fix bolts on the hinge side

Standard option
Lock: high security key lock I class VdS with two keys (120 mm)
Boltwork handle: handle, protruding 60 mm
Hinges: external
Door opening angle: 180°
Mounting holes: 2 holes in the floor
Colour: RAL 7035 (light grey)



Model
Karlsruhe

Art. No.	Model	Outer dimensions*			Inner dimensions			Door light		Anchoring		Weight Kg	Shelves Number	Volume Liters
		Height mm	Width mm	Depth mm	Height mm	Width mm	Depth mm	Height mm	Width mm	Bottom number	Backwall number			
40700	Karlsruhe	375	495	472	229	355	293	229	324	2	-	65	1	65
40701	Karlsruhe	475	385	472	329	245	293	329	214	2	-	64	1	64
40702	Karlsruhe	475	495	472	329	355	293	329	324	2	-	75	1	75
40703	Karlsruhe	675	495	472	529	355	293	529	324	2	-	96	1	96
40704	Karlsruhe	825	495	472	679	355	293	679	324	2	-	110	1	110
40705	Karlsruhe	1175	705	527	1029	565	348	1029	534	2	-	193	2	193
40706	Karlsruhe	1525	705	527	1379	565	348	1379	534	2	-	236	3	236
40707	Karlsruhe	1875	705	527	1729	565	348	1729	534	2	-	284	4	284
40708	Karlsruhe **	1175	955	527	1029	815	348	1029	784	2	-	245	2	245
40709	Karlsruhe **	1875	955	527	1729	815	348	1729	784	2	-	353	4	353
40710	Karlsruhe **	1875	1305	527	1729	1165	348	1729	1134	2	-	448	4	448

* excluding hinges, handles and fittings ** 2-door



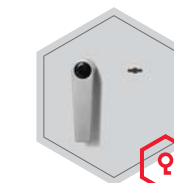
Body: multi-walled body 65 mm thick



Door: multi-walled door construction 94 mm thick

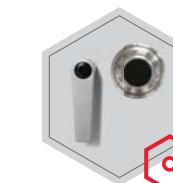
Closure options

Standard option



Key lock

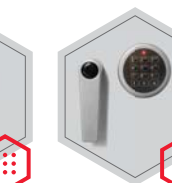
Options available against surcharge



Mechanical code lock



Electronic lock

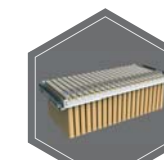


Electronic lock with mechanical emergency (Excl. 40701)

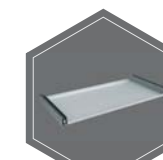
Accessories available against surcharge



Inner safe



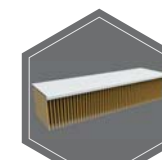
Extensible file frame



Extendable shelf



Extendable drawer for individual arrangement



Shelf for hanging files



Alarm system elements/Alarm system



All information concerning weight, color and dimensions are noncommittal and subject to errors and changes. Minor deviations are conditional on the production process. Technical changes, modifications and printing errors reserved. Safes may be top-heavy, during commissioning, please exercise appropriate caution in accordance with the installation guide. Pictograms are not technical description of the product.



Security level: Class I according to EN 1143-1
Fire rating: Fire-protected safes according to EN 15659 LFS 30 P

Feature - The safe has been approved in accordance with EN 15659 in LFS 30 P fire class.

Suitable for the storage of:

- office documents, office equipment
- valuables
- gun

Description

Dresden series - high security safes with light fire protection.

Body: multi-walled body (62 mm thick)

Door: multi-walled door construction (104 mm thick)

Locking: 4-way locking bolt system - incl. overlapping profile on the hinge side

Standard option

Lock: high security key lock I class VdS with two keys (120 mm)

Boltwork handle: handle, protruding 60mm

Hinges: external

Door opening angle: 180°

Mounting holes: 1 hole in the floor

Colour: RAL 7035 (light grey)

Art. No.	Model	Outer dimensions*			Inner dimensions			Door light		Anchoring		Weight Kg	Shelves Number	Files Number	Volume Liters
		Height mm	Width mm	Depth mm	Height mm	Width mm	Depth mm	Height mm	Width mm	Bottom number	Backwall number				
41000	Dresden	514	604	400	375	468	230	360	450	1	-	111	1	-	40
41001	Dresden	606	636	510	467	500	340	452	482	1	-	148	1	6	79
41002	Dresden	806	636	510	667	500	340	652	482	1	-	180	2	6	113
41003	Dresden	906	636	510	767	500	340	752	482	1	-	199	2	12	130
41004	Dresden	1006	636	510	867	500	340	852	482	1	-	216	2	12	147
41005	Dresden	1206	636	510	1067	500	340	1052	482	1	-	249	3	18	181
41006	Dresden	1506	806	550	1367	670	380	1352	652	1	-	336	3	24	348
41007	Dresden	1806	806	550	1667	670	380	1652	652	1	-	422	4	32	424
41008	Dresden	800	700	550	661	564	380	646	546	1	-	202	2	7	142
41009	Dresden	1250	700	550	1111	564	380	1096	546	1	-	284	3	21	238
41010	Dresden	1500	700	550	1361	564	380	1346	546	1	-	329	3	21	292
41011	Dresden	1950	700	550	1811	564	380	1796	546	1	-	412	4	35	388
41012	Dresden **	1950	950	550	1811	814	380	1796	796	1	-	521	4	50	560
41013	Dresden **	1950	1260	550	1811	1124	380	1796	1106	1	-	648	4	75	774
41014	Dresden **	1806	1486	550	1667	1350	380	1652	1332	1	-	672	4	72	855
41015	Dresden	1006	836	600	867	700	430	852	682	1	-	285	2	18	261
41016	Dresden	1256	836	600	1117	700	430	1102	682	1	-	337	3	27	336
41017	Dresden	1506	836	600	1367	700	430	1352	682	1	-	385	3	27	411
41018	Dresden	1806	836	600	1667	700	430	1652	682	1	-	452	4	36	502
41019	Dresden **	1806	1200	600	1667	1064	430	1652	1046	1	-	598	4	56	763

* excluding hinges, handles and fittings ** 2-door



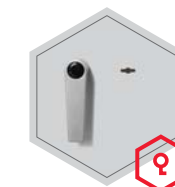
Body: multi-walled body 62 mm thick



Door: multi-walled door construction 104 mm thick

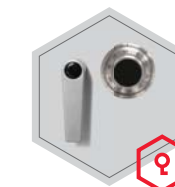
Closure options

Standard option

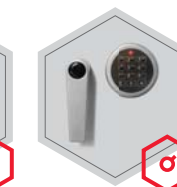


Key lock

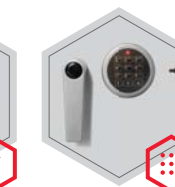
Options available against surcharge



Mechanical code lock



Electronic lock



Electronic lock with mechanical emergency (Excl. 41012)

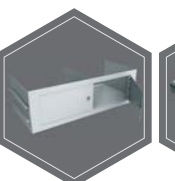
Accessories available against surcharge



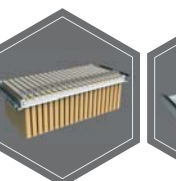
Left door



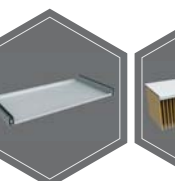
Inner safe (Excl. 41000; 41012-41014; 41019)



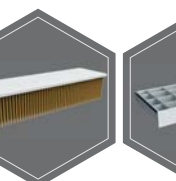
Inner safe with partition wall, 2 - door (Excl. 41000-41011; 41015-41019)



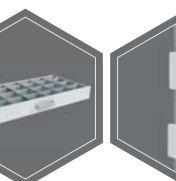
Extensible file frame (Excl. 41000)



Extensible shelf (Excl. 41000)



Shelf for hanging files (Excl. 41000)



Extendable drawer for individual arrangement (Excl. 41000)



Alarm system elements/Alarm system (Excl. 41000)



All information concerning weight, color and dimensions are noncommittal and subject to errors and changes. Minor deviations are conditional on the production process. Technical changes, modifications and printing errors reserved. Safes may be top-heavy, during commissioning, please exercise appropriate caution in accordance with the installation guide. Pictograms are not technical description of the product.



Security level: Class II according to EN 1143-1
Fire rating: Fire-protected safes according to EN 15659 LFS 30 P

Feature - The safe has been approved in accordance with EN 15659 in LFS 30 P fire class.

Suitable for the storage of:

- office documents, office equipment
- valuables

Description

Brüssel series - high security safes with light fire protection.

Body: multi-walled body (62 mm thick)

Door: multi-walled door construction (104 mm thick)

Locking: 4-way locking bolt system - incl. overlapping profile on the hinge side

Standard option

Lock: high security key lock I class VdS with two keys (120 mm)

Boltwork handle: handle, protruding 60mm

Hinges: external

Door opening angle: 180°

Mounting holes: 1 hole in the floor

Colour: RAL 7035 (light grey)

Art. No.	Model	Outer dimensions*			Inner dimensions			Door light		Anchoring		Weight Kg	Shelves Number	Files Number	Volume Liters
		Height mm	Width mm	Depth mm	Height mm	Width mm	Depth mm	Height mm	Width mm	Bottom number	Backwall number				
41400	Brüssel	514	604	400	375	468	230	360	450	1	-	108	1	-	40
41401	Brüssel	606	636	510	467	500	340	452	482	1	-	146	1	6	79
41402	Brüssel	806	636	510	667	500	340	652	482	1	-	183	2	6	113
41403	Brüssel	906	636	510	767	500	340	752	482	1	-	201	2	12	130
41404	Brüssel	1006	636	510	867	500	340	852	482	1	-	218	2	12	147
41405	Brüssel	1206	636	510	1067	500	340	1052	482	1	-	256	3	18	181
41406	Brüssel	1506	806	550	1367	670	380	1352	652	1	-	376	3	24	348
41407	Brüssel	1806	806	550	1667	670	380	1652	652	1	-	445	4	32	424
41408	Brüssel	800	700	550	661	564	380	646	546	1	-	204	2	7	142
41409	Brüssel	1250	700	550	1111	564	380	1096	546	1	-	294	3	21	238
41410	Brüssel	1500	700	550	1361	564	380	1346	546	1	-	341	3	21	292
41411	Brüssel	1950	700	550	1811	564	380	1796	546	1	-	433	4	35	388
41412	Brüssel **	1950	950	550	1811	814	380	1796	796	1	-	537	4	50	560
41413	Brüssel **	1950	1260	550	1811	1124	380	1796	1106	1	-	663	4	75	774
41414	Brüssel **	1806	1486	550	1667	1350	380	1652	1332	1	-	709	4	72	855
41415	Brüssel	1006	836	600	867	700	430	852	682	1	-	290	2	18	261
41416	Brüssel	1256	836	600	1117	700	430	1102	682	1	-	350	3	27	336
41417	Brüssel	1506	836	600	1367	700	430	1352	682	1	-	404	3	27	411
41418	Brüssel	1806	836	600	1667	700	430	1652	682	1	-	477	4	36	502
41419	Brüssel **	1806	1200	600	1667	1064	430	1652	1046	1	-	624	4	56	763

* excluding hinges, handles and fittings ** 2-door



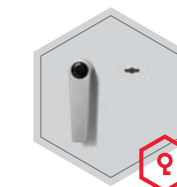
Body: multi-walled body 62 mm thick



Door: multi-walled door construction 104 mm thick

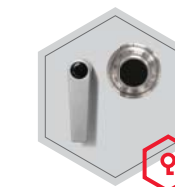
Closure options

Standard option

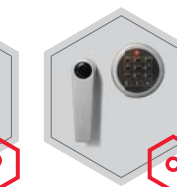


Key lock

Options available against surcharge



Mechanical code lock



Electronic lock

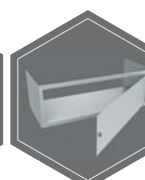


Electronic lock with mechanical emergency (Excl. 41412)

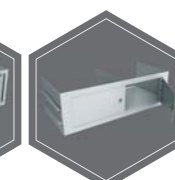
Accessories available against surcharge



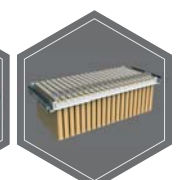
Left door



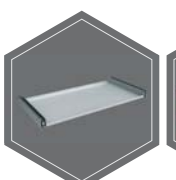
Inner safe (Excl. 41400-41414; 41419)



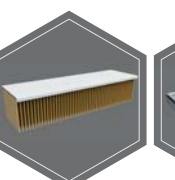
Inner safe with partition wall, 2 - door (Excl. 41400-41411; 41415-41418)



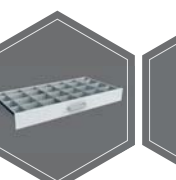
Extensible file frame (Excl. 41400)



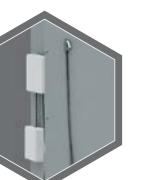
Extensible shelf (Excl. 41400)



Shelf for hanging files (Excl. 41400)



Extensible drawer for individual arrangement (Excl. 41400)



Alarm system elements/Alarm system (Excl. 41400)



All information concerning weight, color and dimensions are noncommittal and subject to errors and changes. Minor deviations are conditional on the production process. Technical changes, modifications and printing errors reserved. Safes may be top-heavy, during commissioning, please exercise appropriate caution in accordance with the installation guide. Pictograms are not technical description of the product.



Security level: Class II according to EN 1143-1
Fire rating: Fire-protected safes according to EN 15659 LFS 30 P

Feature - The safe has been approved in accordance with EN 15659 in LFS 30 P fire class.

Suitable for the storage of:

- office documents, office equipment
- valuables

Description

Paris series - high security safes with light fire protection.

Body: multi-walled body (52 mm thick)

Door: multi-walled door construction (109 mm thick)

Locking: 4-way locking bolt system - incl. overlapping profile on the hinge side

Standard option

Lock: high security key lock I class VdS with two keys (145 mm)

Boltwork handle: handle, protruding 60mm

Hinges: external

Door opening angle: 180°

Mounting holes: 1 hole in the floor

Colour: RAL 7035 (light grey)

Art. No.	Model	Outer dimensions*			Inner dimensions			Door light		Anchoring		Weight Kg	Shelves Number	Files Number	Volume Liters
		Height mm	Width mm	Depth mm	Height mm	Width mm	Depth mm	Height mm	Width mm	Bottom number	Backwall number				
41500	Paris	514	604	400	395	488	234	380	470	1	-	230	1	-	45
41501	Paris	606	636	510	487	520	344	472	502	1	-	319	1	6	87
41502	Paris	806	636	510	687	520	344	672	502	1	-	394	2	12	123
41503	Paris	906	636	510	787	520	344	772	502	1	-	430	2	12	141
41504	Paris	1006	636	510	887	520	344	872	502	1	-	466	2	12	159
41505	Paris	1206	636	510	1087	520	344	1072	502	1	-	541	3	18	194
41506	Paris	1506	806	550	1387	690	384	1372	672	1	-	781	3	36	367
41507	Paris	1806	806	550	1687	690	384	1672	672	1	-	910	4	42	447
41508	Paris	800	700	550	681	584	384	666	566	1	-	439	2	14	153
41509	Paris	1250	700	550	1131	584	384	1116	566	1	-	620	3	22	254
41510	Paris	1500	700	550	1381	584	384	1366	566	1	-	719	3	28	310
41511	Paris	1950	700	550	1831	584	384	1816	566	1	-	899	4	35	411
41512	Paris **	1950	950	550	1831	834	384	1816	816	1	-	1145	4	57	586
41513	Paris **	1950	1260	550	1831	1144	384	1816	1126	1	-	1368	4	78	804
41514	Paris **	1806	1486	550	1687	1370	384	1672	1352	1	-	1492	4	84	887
41515	Paris	1006	836	600	887	720	434	872	702	1	-	618	2	22	277
41516	Paris	1256	836	600	1137	720	434	1122	702	1	-	735	3	29	355
41517	Paris	1506	836	600	1387	720	434	1372	702	1	-	847	3	36	433
41518	Paris	1806	836	600	1687	720	434	1672	702	1	-	987	4	42	527
41519	Paris **	1806	1200	600	1687	1084	434	1672	1066	1	-	1308	4	65	794

* excluding hinges, handles and fittings ** 2-door



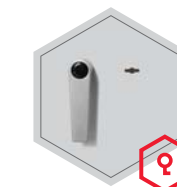
Body: multi-walled body 52 mm thick



Door: multi-walled door construction 109 mm thick

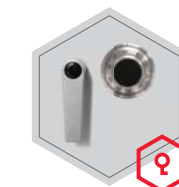
Closure options

Standard option

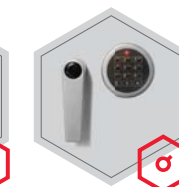


Key lock

Options available against surcharge



Mechanical code lock



Electronic lock



Electronic lock with mechanical emergency (Excl. 41512)

Accessories available against surcharge



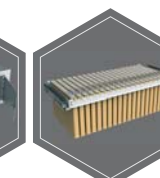
Left door



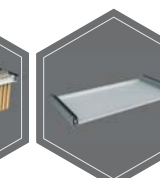
Inner safe (Excl. 41500; 41512-41514; 41519)



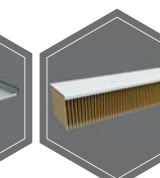
Inner safe with partition wall, 2 - door (Excl. 41500-41511; 41515-41518)



Extensible file frame (Excl. 41500)



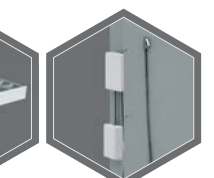
Extensible shelf (Excl. 41500)



Shelf for hanging files (Excl. 41500)



Extensible drawer for individual arrangement (Excl. 41500)



Alarm system elements/Alarm system (Excl. 41500)



All information concerning weight, color and dimensions are noncommittal and subject to errors and changes. Minor deviations are conditional on the production process. Technical changes, modifications and printing errors reserved. Safes may be top-heavy, during commissioning, please exercise appropriate caution in accordance with the installation guide. Pictograms are not technical description of the product.



Security level: Class III according to EN 1143-1
Fire rating: Fire-protected safes according to EN 15659 LFS 30 P

Feature - The safe has been approved in accordance with EN 15659 in LFS 30 P fire class.

Suitable for the storage of:

- office documents, office equipment
- valuables

Description

Rom series - high security safes with light fire protection.

Body: multi-walled body (60 mm thick)

Door: multi-walled door construction (130 mm thick)

Locking: 4-way locking bolt system - incl. overlapping profile on the hinge side

Standard option

Lock: high security key lock II class VdS with two keys (170 mm)

Boltwork handle: handle, protruding 60mm

Hinges: external

Door opening angle: 180°

Mounting holes: 1 hole in the floor

Colour: RAL 7035 (light grey)

Art. No.	Model	Outer dimensions*			Inner dimensions			Door light		Anchoring		Weight Kg	Shelves Number	Files Number	Volume Liters
		Height mm	Width mm	Depth mm	Height mm	Width mm	Depth mm	Height mm	Width mm	Bottom number	Backwall number				
42001	Rom	606	636	510	456	504	304	441	486	1	-	354	1	6	70
42002	Rom	806	636	510	656	504	304	641	486	1	-	447	2	6	101
42003	Rom	906	636	510	756	504	304	741	486	1	-	492	2	12	116
42004	Rom	1006	636	510	856	504	304	841	486	1	-	536	2	12	131
42005	Rom	1206	636	510	1056	504	304	1041	486	1	-	633	3	18	162
42006	Rom	1506	806	550	1356	674	344	1341	656	1	-	936	3	24	315
42007	Rom	1806	806	550	1656	674	344	1641	656	1	-	1100	4	32	384
42008	Rom	800	700	550	650	568	344	635	550	1	-	499	2	7	127
42009	Rom	1250	700	550	1100	568	344	1085	550	1	-	721	3	21	215
42010	Rom	1500	700	550	1350	568	344	1335	550	1	-	848	3	21	264
42011	Rom	1950	700	550	1800	568	344	1785	550	1	-	1019	4	35	352
42012	Rom **	1950	950	550	1800	818	344	1785	800	1	-	1355	4	50	507
42013	Rom **	1950	1260	550	1800	1128	344	1785	1110	1	-	1547	4	75	698
42014	Rom **	1806	1486	550	1656	1354	344	1641	1336	1	-	1780	4	72	771
42015	Rom	1006	836	700	856	704	494	841	686	1	-	769	2	18	298
42016	Rom	1256	836	700	1106	704	494	1091	686	1	-	942	3	27	385
42017	Rom	1506	836	700	1356	704	494	1341	686	1	-	1067	3	27	472
42018	Rom	1806	836	700	1656	704	494	1641	686	1	-	1245	4	36	576
42019	Rom **	1806	1200	700	1656	1068	494	1641	1050	1	-	1641	4	56	874

* excluding hinges, handles and fittings ** 2-door



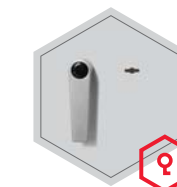
Body: multi-walled body 60 mm thick



Door: multi-walled door construction 130 mm thick

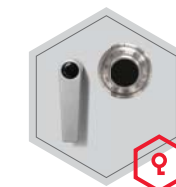
Closure options

Standard option

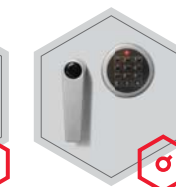


Key lock

Options available against surcharge



Mechanical code lock



Electronic lock



Electronic lock with mechanical emergency (Excl. 42012)

Accessories available against surcharge



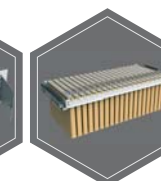
Left door



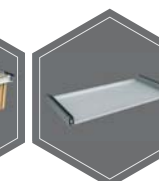
Inner safe (Excl. 42012-42014; 42019)



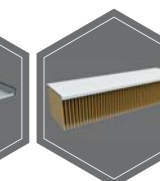
Inner safe with partition wall, 2 - door (Excl. 42001-42011; 42015-42018)



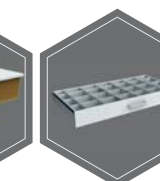
Extensible file frame



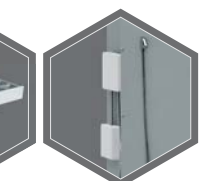
Extendable shelf



Shelf for hanging files



Extendable drawer for individual arrangement



Alarm system elements/Alarm system



All information concerning weight, color and dimensions are noncommittal and subject to errors and changes. Minor deviations are conditional on the production process. Technical changes, modifications and printing errors reserved. Safes may be top-heavy, during commissioning, please exercise appropriate caution in accordance with the installation guide. Pictograms are not technical description of the product.



Security level: Class IV according to EN 1143-1
Fire rating: Fire-protected safes according to EN 15659 LFS 30 P

Feature - The safe has been approved in accordance with EN 15659 in LFS 30 P fire class.

Suitable for the storage of:

- office documents, office equipment
- valuables

Description

London series - high security safes with light fire protection.

Body: multi-walled body (60 mm thick)

Door: multi-walled door construction (130 mm thick)

Locking: 4-way locking bolt system - incl. overlapping profile on the hinge side

Standard option

Lock: high security key lock VdS II class with two keys (170 mm), one of them folding key and mechanical emergency lock VdS II class

Boltwork handle: handle, protruding 60 mm

Hinges: external

Door opening angle: 180°

Mounting holes: 1 hole in the floor

Colour: RAL 7035 (light grey)



Art. No.	Model	Outer dimensions*			Inner dimensions			Door light		Anchoring		Weight Kg	Shelves Number	Files Number	Volume Liters
		Height mm	Width mm	Depth mm	Height mm	Width mm	Depth mm	Height mm	Width mm	Bottom number	Backwall number				
42501	London	706	636	510	556	504	304	541	486	1	-	426	1	6	85
42502	London	806	636	510	656	504	304	641	486	1	-	471	2	6	101
42503	London	906	636	510	756	504	304	741	486	1	-	518	2	12	116
42504	London	1006	636	510	856	504	304	841	486	1	-	565	2	12	132
42505	London	1206	636	510	1056	504	304	1041	486	1	-	666	3	18	162
42506	London	1506	806	550	1356	674	344	1341	656	1	-	985	3	24	314
42507	London	1806	806	550	1656	674	344	1641	656	1	-	1157	4	32	384
42508	London	800	700	550	650	568	344	635	550	1	-	526	2	7	127
42509	London	1250	700	550	1100	568	344	1085	550	1	-	759	3	21	215
42510	London	1500	700	550	1350	568	344	1335	550	1	-	892	3	21	264
42511	London	1950	700	550	1800	568	344	1785	550	1	-	1074	4	35	352
42512	London**	1950	950	550	1800	818	344	1785	800	1	-	1423	4	55	507
42513	London**	1950	1260	550	1800	1128	344	1785	1110	1	-	1631	4	75	698
42514	London**	1806	1486	550	1656	1354	344	1641	1336	1	-	1871	4	72	771
42515	London	1006	836	700	856	704	494	841	686	1	-	808	2	18	298
42516	London	1256	836	700	1106	704	494	1091	686	1	-	963	3	27	385
42517	London	1506	836	700	1356	704	494	1341	686	1	-	1120	3	27	472
42518	London	1806	836	700	1656	704	494	1641	686	1	-	1307	4	36	576
42519	London**	1806	1200	700	1656	1068	494	1641	1050	1	-	1720	4	56	874

* excluding hinges, handles and fittings ** 2-door



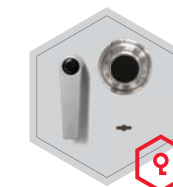
Body: multi-walled body 60 mm thick



Door: multi-walled door construction 130 mm thick

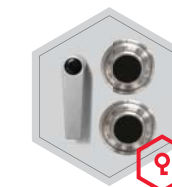
Closure options

Standard option



Key lock and mechanical code lock

Options available against surcharge

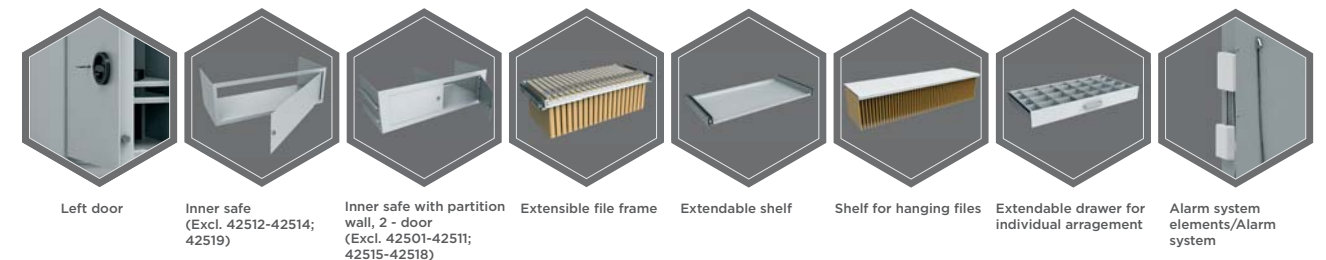


Mechanical code lock



Electronic lock

Accessories available against surcharge



All information concerning weight, color and dimensions are noncommittal and subject to errors and changes. Minor deviations are conditional on the production process. Technical changes, modifications and printing errors reserved. Safes may be top-heavy, during commissioning, please exercise appropriate caution in accordance with the installation guide. Pictograms are not technical description of the product.

Model
Amsterdam



Security level: Class V according to EN 1143-1
Fire rating: Fire-protected safes according to EN 15659 LFS 30 P

Feature - The safe has been approved in accordance with EN 15659 in LFS 30 P fire class.

Suitable for the storage of:

- office documents, office equipment
- valuables

Description

Amsterdam series - high security safes with light fire protection.

Body: multi-walled body (78 mm thick)

Door: multi-walled door construction (144 mm thick)

Locking: 4-way locking bolt system - incl. overlapping profile on the hinge side

Standard option

Lock: high security key lock VdS II class with two keys (170 mm), one of them folding key and mechanical emergency lock VdS II class

Boltwork handle: handle, protruding 60 mm

Hinges: external

Door opening angle: 180°

Mounting holes: 1 hole in the floor

Colour: RAL 7035 (light grey)



Model
Amsterdam

Art. No.	Model	Outer dimensions*			Inner dimensions			Door light		Anchoring		Weight Kg	Shelves Number	Files Number	Volume Liters
		Height mm	Width mm	Depth mm	Height mm	Width mm	Depth mm	Height mm	Width mm	Bottom number	Backwall number				
42701	Amsterdam	842	672	538	656	504	299	641	486	1	-	576	2	6	99
42702	Amsterdam	942	672	538	756	504	299	741	486	1	-	629	2	12	114
42703	Amsterdam	1042	672	538	856	504	299	841	486	1	-	682	2	12	129
42704	Amsterdam	1242	672	538	1056	504	299	1041	486	1	-	790	3	18	159
42705	Amsterdam	1542	842	578	1356	674	339	1341	656	1	-	1158	3	24	310
42706	Amsterdam	1842	842	578	1656	674	339	1641	656	1	-	1352	4	32	378
42707	Amsterdam	836	736	578	650	568	339	635	550	1	-	641	2	7	125
42708	Amsterdam	1286	736	578	1100	568	339	1085	550	1	-	905	3	21	212
42709	Amsterdam	1536	736	578	1350	568	339	1335	550	1	-	1051	3	21	260
42710	Amsterdam	1986	736	578	1800	568	339	1785	550	1	-	1315	4	35	347
42711	Amsterdam **	1986	986	578	1800	818	339	1785	800	1	-	1655	4	50	499
42712	Amsterdam **	1986	1296	578	1800	1128	339	1785	1110	1	-	2034	4	75	688
42713	Amsterdam **	1842	1522	578	1656	1354	339	1641	1336	1	-	2171	4	72	760
42714	Amsterdam	1042	872	728	856	704	489	841	686	1	-	995	2	18	295
42715	Amsterdam	1292	872	728	1106	704	489	1091	686	1	-	1180	3	27	381
42716	Amsterdam	1542	872	728	1356	704	489	1341	686	1	-	1362	3	27	467
42717	Amsterdam	1842	872	728	1656	704	489	1641	686	1	-	1582	4	36	570
42718	Amsterdam **	1842	1236	728	1656	1068	489	1641	1050	1	-	2066	4	56	865

* excluding hinges, handles and fittings ** 2-door



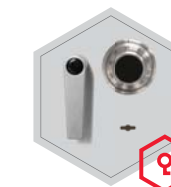
Body: multi-walled body 78 mm thick



Door: multi-walled door construction 144 mm thick

Closure options

Standard option



Key lock and mechanical code lock

Options available against surcharge



Mechanical code lock

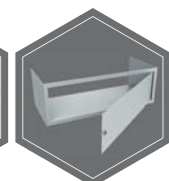


Electronic lock

Accessories available against surcharge



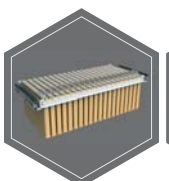
Left door



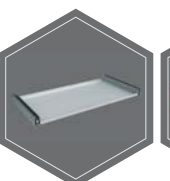
Inner safe (Excl. 42712-42714; 42718)



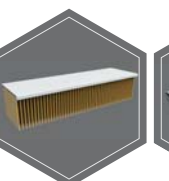
Inner safe with partition wall, 2 - door (Excl. 42701-42711; 42715-42717)



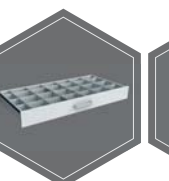
Extensible file frame



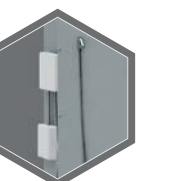
Extendable shelf



Shelf for hanging files



Extendable drawer for individual arrangement



Alarm system elements/Alarm system



All information concerning weight, color and dimensions are noncommittal and subject to errors and changes. Minor deviations are conditional on the production process. Technical changes, modifications and printing errors reserved. Safes may be top-heavy, during commissioning, please exercise appropriate caution in accordance with the installation guide. Pictograms are not technical description of the product.



Security level: Class S2 according to EN 14450/VdS 2862
Fire rating: Fire-protected safes according to EN 15659 LFS 60 P

Suitable for the storage of:

- documents
- valuables

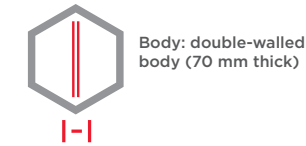
Description
 Model Weimar - high security safe - document safe with fire resistance LFS 60 P.

Body: double-walled body (70 mm thick)
Door: multi-walled door construction (95 mm thick)
Locking: 4-way locking bolt system - incl. fix bolts on the hinge side

Standard option
Lock: high security key lock I class VdS with two keys (95 mm)
Boltwork handle: handle, protruding 60 mm
Hinges: external
Door opening angle: 180°
Mounting holes: 2 holes in the floor and/or 2 in the back wall
Colour: RAL 7035 (light grey)

Art. No.	Model	Outer dimensions*			Inner dimensions			Door light		Anchoring		Weight Kg	Shelves Number	Files Number	Volume Liters
		Height mm	Width mm	Depth mm	Height mm	Width mm	Depth mm	Height mm	Width mm	Bottom number	Backwall number				
42800.02	Weimar	380	480	465	240	340	300	238	338	2	2**	81	0	3	24
42801.02	Weimar	430	480	465	290	340	300	288	338	2	2**	86	1	3	30
42802.02	Weimar	470	480	465	330	340	300	328	338	2	2**	91	1	4	34
42803.02	Weimar	820	480	465	680	340	300	678	338	2	- ***	131	1	8	69
42804.02	Weimar	1170	480	465	1030	340	300	1028	338	2	- ***	198	2	12	105

* excluding hinges, handles and fittings ** not drilled *** optional

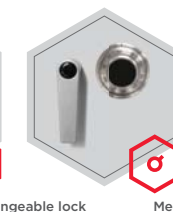
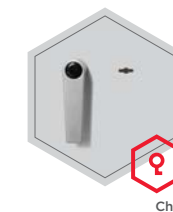


Closure options

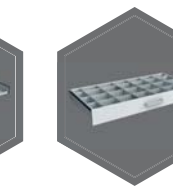
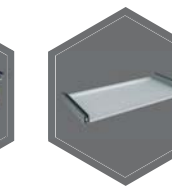
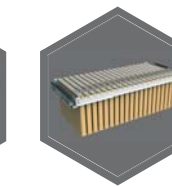
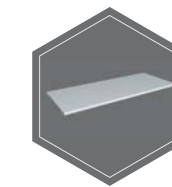
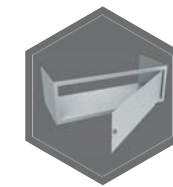
Standard option



Options available against surcharge



Accessories available against surcharge



All information concerning weight, color and dimensions are noncommittal and subject to errors and changes. Minor deviations are conditional on the production process. Technical changes, modifications and printing errors reserved. Safes may be top-heavy, during commissioning, please exercise appropriate caution in accordance with the installation guide. Pictograms are not technical description of the product.

Model
Leverkusen



Security level: Class S2 according to EN 14450
Security level: B according to VDMA 24992-Conditions May'95
Fire rating: Fire-protected safes according to EN 1047-1 S 60 P

The safe has been approved in accordance with EN 1047-1 in fire class 60 P. The certification was awarded by VdS they have fire and impact tests.

- Suitable for the storage of:
- office documents, office equipment
 - gun (see additional accessories)

Description
 Series Leverkusen - the safes with one hour protection from fire S 60 P.

Body: double-walled body (50 mm thick)
Door: multi-walled door construction (95 mm thick)
Locking: 4-way locking bolt system - incl. fix bolts on the hinge side

Standard option
Lock: high security key lock I class VdS with two keys (120 mm)
Boltwork handle: handle, protruding 60 mm
Hinges: external
Door opening angle: 180°
Mounting holes: 2 holes in the floor
Colour: RAL 7035 (light grey)

Model
Leverkusen

Art. No.	Model	Outer dimensions*			Inner dimensions			Door light		Anchoring		Weight Kg	Shelves Number	Files Number	Volume Liters
		Height mm	Width mm	Depth mm	Height mm	Width mm	Depth mm	Height mm	Width mm	Bottom number	Backwall number				
43000	Leverkusen	380	463	427	279	351	295	264	328	2	-	90	1	3**	29
43001	Leverkusen	440	463	427	339	351	295	324	328	2	-	99	1	4	35
43002	Leverkusen	615	463	427	515	351	295	499	328	2	-	118	1	6	53
43003	Leverkusen	775	463	427	674	351	295	659	328	2	-	148	2	8	70
43004	Leverkusen	1137	704	471	1036	592	339	1021	569	2	-	270	2	21	208
43005	Leverkusen	1322	704	471	1221	592	339	1206	569	2	-	305	3	23	245
43006	Leverkusen	1507	704	471	1406	592	339	1391	569	2	-	340	3	28	282

* excluding hinges, handles and fittings ** crosswise



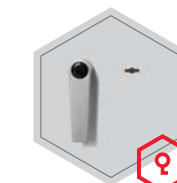
Body: double-walled body 50 mm thick



Door: multi-walled door construction 95 mm thick

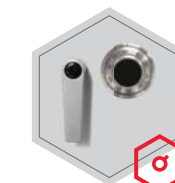
Closure options

Standard option

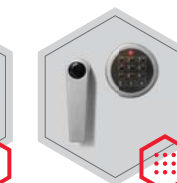


Key lock

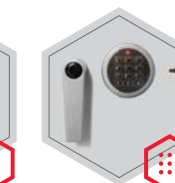
Options available against surcharge



Mechanical code lock

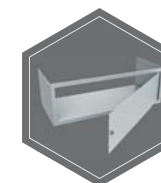


Electronic lock

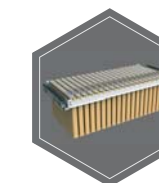


Electronic lock with mechanical emergency (Excl. 43000-43003)

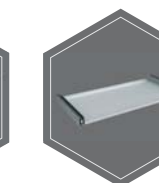
Accessories available against surcharge



Inner safe



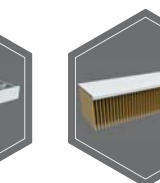
Extensible file frame



Extendable shelf



Extendable drawer for individual arrangement



Shelf for hanging files



All information concerning weight, color and dimensions are noncommittal and subject to errors and changes. Minor deviations are conditional on the production process. Technical changes, modifications and printing errors reserved. Safes may be top-heavy, during commissioning, please exercise appropriate caution in accordance with the installation guide. Pictograms are not technical description of the product.

Model
Leverkusen Super



Security level: Class S2 according to EN 14450
Security level: B according to VDMA 24992 - Conditions May'95
Fire rating: Fire-protected safes according to EN 1047-1 S 60 P

The safe has been approved in accordance with EN 1047-1 in fire class 60 P. The certification was awarded by VdS they have fire and impact tests.

Suitable for the storage of:
 office documents, office equipment
 gun (see additional accessories)

Description
 Series Leverkusen Super - the safes with one-hour protection from fire S 60 P.

Body: double-walled body (50 mm thick)
Door: multi-walled door construction (95 mm thick)
Locking: 4-way locking bolt system - incl. fix bolts on the hinge side

Standard option
Lock: high security key lock I class VdS with two keys (120 mm)
Boltwork handle: handle, protruding 60 mm
Hinges: external
Door opening angle: 180°
Mounting holes: 2 holes in the floor
Colour: RAL 7035 (light grey)

Model
Leverkusen Super

Art. No.	Model	Outer dimensions*			Inner dimensions			Door light		Anchoring		Weight Kg	Shelves Number	Files Number	Volume Liters
		Height mm	Width mm	Depth mm	Height mm	Width mm	Depth mm	Height mm	Width mm	Bottom number	Backwall number				
43100	Leverkusen Super	1550	886	545	1449	774	413	1434	751	2	-	452	3	40	463
43102	Leverkusen Super	1700	886	545	1599	774	413	1584	751	2	-	488	4	40	511
43104	Leverkusen Super	1884	886	545	1783	774	413	1768	751	2	-	527	4	50	570
43107	Leverkusen Super **	1884	975	559	1783	863	403	1768	845	2	-	634	4	55	620
43108	Leverkusen Super **	1884	975	696	1783	863	540	1768	845	2	-	683	4	55	831
43110	Leverkusen Super **	1884	1128	559	1783	1016	403	1768	998	2	-	717	4	65	730
43111	Leverkusen Super **	1884	1128	696	1783	1016	540	1768	998	2	-	768	4	65	978
43112	Leverkusen Super **	1884	1282	459	1783	1170	303	1768	1152	2	-	765	4	75	632
43113	Leverkusen Super **	1884	1282	559	1783	1170	403	1768	1152	2	-	805	4	75	841
43114	Leverkusen Super **	1884	1282	696	1783	1170	540	1768	1152	2	-	860	4	75	1126

* excluding hinges, handles and fittings ** 2-door



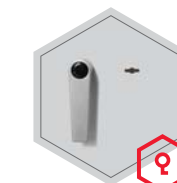
Body: double-walled body 50 mm thick



Door: multi-walled door construction 95 mm thick

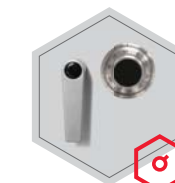
Closure options

Standard option

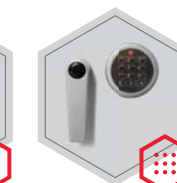


Key lock

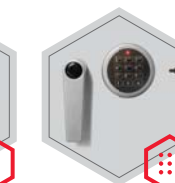
Options available against surcharge



Mechanical code lock

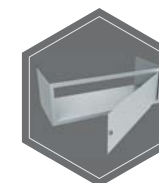


Electronic lock

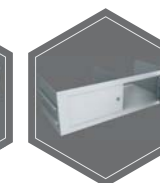


Electronic lock with mechanical emergency (Excl. 43106-43108)

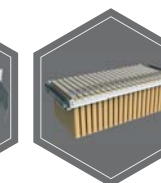
Accessories available against surcharge



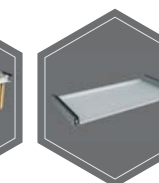
Inner safe



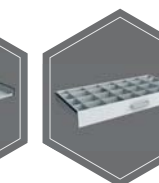
Inner safe with partition wall, 2 - door



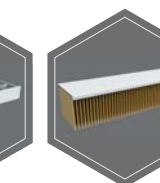
Extensible file frame



Extendable shelf



Extendable drawer for individual arrangement



Shelf for hanging files



Floppy disk insert S60DIS



All information concerning weight, color and dimensions are noncommittal and subject to errors and changes. Minor deviations are conditional on the production process. Technical changes, modifications and printing errors reserved. Safes may be top-heavy, during commissioning, please exercise appropriate caution in accordance with the installation guide. Pictograms are not technical description of the product.

Model
Leverkusen Office



Security level: Class S2 according to EN 14450
Security level: B according to VDMA 24992 - Conditions May'95
Fire rating: Fire-protected safes according to EN 1047-1 S 60 P

The safe has been approved in accordance with EN 1047-1 in fire class 60 P. The certification was awarded by VdS they have fire and impact tests.

Suitable for the storage of:
 • office documents, office equipment
 • gun (see additional accessories)

Description
 Series Leverkusen Office - the safes with one-hour protection from fire S 60 P.

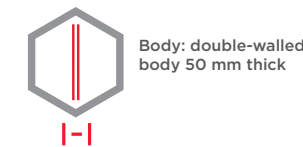
Body: double-walled body (50 mm thick)
Door: multi-walled door construction (95 mm thick)
Locking: 4-way locking bolt system - incl. fix bolts on the hinge side

Standard option
Lock: high security key lock I class VdS with two keys (120 mm)
Boltwork handle: handle, protruding 60 mm
Hinges: external
Door opening angle: 180°
Mounting holes: 2 holes in the floor
Colour: RAL 7035 (light grey)

Model
Leverkusen Office

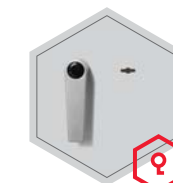
Art. No.	Model	Outer dimensions*			Inner dimensions			Door light		Anchoring		Weight Kg	Shelves Number	Files Number	Volume Liters
		Height mm	Width mm	Depth mm	Height mm	Width mm	Depth mm	Height mm	Width mm	Bottom number	Backwall number				
43200	Leverkusen Office **	901	975	459	800	863	303	785	845	2	-	320	1	24	209
43201	Leverkusen Office **	901	975	559	800	863	403	785	845	2	-	355	1	24	278
43202	Leverkusen Office **	901	1128	459	800	1016	303	785	998	2	-	363	1	29	246
43204	Leverkusen Office **	901	1282	459	800	1170	303	785	1152	2	-	399	1	33	284
43207	Leverkusen Office **	1045	1128	506	944	1016	350	929	998	2	-	414	2	35	336
43208	Leverkusen Office **	1045	1282	506	944	1170	350	929	1152	2	-	455	2	39	387
43209	Leverkusen Office **	1189	975	459	1088	863	303	1073	845	2	-	390	2	33	285
43211	Leverkusen Office **	1189	1128	459	1088	1016	303	1073	998	2	-	434	2	39	335
43213	Leverkusen Office **	1189	1282	459	1088	1170	303	1073	1152	2	-	477	2	45	386
43214	Leverkusen Office **	1189	1282	559	1088	1170	403	1073	1152	2	-	516	2	45	513

* excluding hinges, handles and fittings ** 2-door

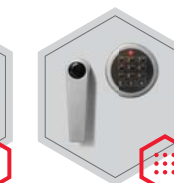
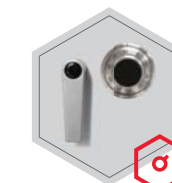


Closure options

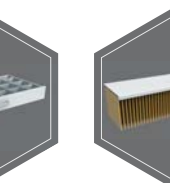
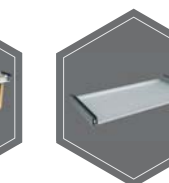
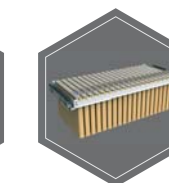
Standard option



Options available against surcharge



Accessories available against surcharge



All information concerning weight, color and dimensions are noncommittal and subject to errors and changes. Minor deviations are conditional on the production process. Technical changes, modifications and printing errors reserved. Safes may be top-heavy, during commissioning, please exercise appropriate caution in accordance with the installation guide. Pictograms are not technical description of the product.



Security level: Class 0 according to EN 1143-1
Fire rating: Fire-protected safes according to EN 1047-1 S 60 P

The safe has been approved in accordance with EN 1047-1 in fire class 60 P. The certification was awarded by VdS they have fire and impact tests.

Suitable for the storage of:

- office documents, office equipment
- valuables
- gun (see additional accessories)

Description
 Series Köln - the safes with one-hour protection from fire S 60 P.

Body: multi-walled body (50 mm thick)
Door: multi-walled door construction (95 mm thick)
Locking: 4-way locking bolt system - incl. fix bolts on the hinge side

Standard option
Lock: high security key lock I class VdS with two keys (120 mm)
Boltwork handle: handle, protruding 60 mm
Hinges: external
Door opening angle: 180°
Mounting holes: 1 hole in the floor
Colour: RAL 7035 (light grey)

Art. No.	Model	Outer dimensions*			Inner dimensions			Door light		Anchoring		Weight Kg	Shelves Number	Files Number	Volume Liters
		Height mm	Width mm	Depth mm	Height mm	Width mm	Depth mm	Height mm	Width mm	Bottom number	Backwall number				
44000	Köln	379	589	471	278	477	339	263	454	1	-	125	1	3**	45
44001	Köln	482	589	471	381	477	339	366	454	1	-	140	1	6	62
44002	Köln	615	589	471	514	477	339	499	454	1	-	160	2	8	83
44003	Köln	801	589	471	700	477	339	685	454	1	-	210	2	12	113
44004	Köln	1137	704	471	1036	592	339	1021	569	1	-	315	3	21	208
44005	Köln	1322	704	471	1221	592	339	1206	569	1	-	340	3	23	245
44006	Köln	1507	704	471	1406	592	339	1391	569	1	-	393	3	28	282
44007	Köln	380	463	440	279	351	308	264	328	1	-	98	1	3**	30
44008	Köln	440	463	440	339	351	308	324	328	1	-	105	1	4	37
44009	Köln	615	463	440	514	351	308	499	328	1	-	140	2	6	56
44010	Köln	775	463	440	674	351	308	659	328	1	-	168	2	8	73

* excluding hinges, handles and fittings ** crosswise



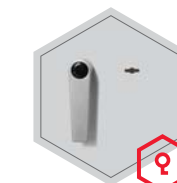
Body: multi-walled body 50 mm thick



Door: multi-walled door construction 95 mm thick

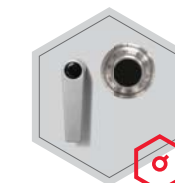
Closure options

Standard option

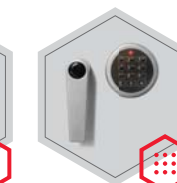


Key lock

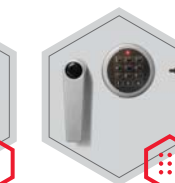
Options available against surcharge



Mechanical code lock

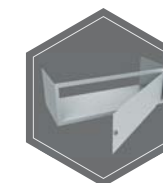


Electronic lock

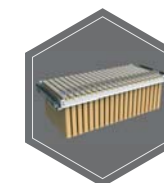


Electronic lock with mechanical emergency (Excl. 44007, 44008, 44009, 44010)

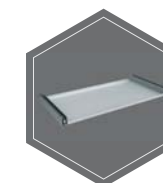
Accessories available against surcharge



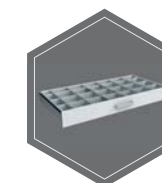
Inner safe



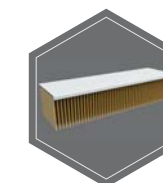
Extensible file frame



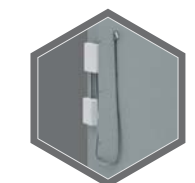
Extendable shelf



Extendable drawer for individual arrangement



Shelf for hanging files



Prepared for alarm system/ alarm system



All information concerning weight, color and dimensions are noncommittal and subject to errors and changes. Minor deviations are conditional on the production process. Technical changes, modifications and printing errors reserved. Safes may be top-heavy, during commissioning, please exercise appropriate caution in accordance with the installation guide. Pictograms are not technical description of the product.

Model
Köln Super



Security level: Class 0 according to EN 1143-1
Fire rating: Fire-protected safes according to EN 1047-1 S 60 P

The safe has been approved in accordance with EN 1047-1 in fire class 60 P. The certification was awarded by VdS they have fire and impact tests.

Suitable for the storage of:

- office documents, office equipment
- valuables
- gun (see additional accessories)

Description

Series Köln Super - the safes with one-hour protection from fire S 60 P.

Body: multi-walled body (50 mm thick)

Door: multi-walled door construction (95 mm thick)

Locking: 4-way locking bolt system - incl. fix bolts on the hinge side

Standard option

Lock: high security key lock I class VdS with two keys (120 mm)

Boltwork handle: handle, protruding 60 mm

Hinges: external

Door opening angle: 180°

Mounting holes: 1 hole in the floor

Colour: RAL 7035 (light grey)



Model
Köln Super

Art. No.	Model	Outer dimensions*			Inner dimensions			Door light		Anchoring		Weight Kg	Shelves Number	Files Number	Volume Liters
		Height mm	Width mm	Depth mm	Height mm	Width mm	Depth mm	Height mm	Width mm	Bottom number	Backwall number				
44100	Köln Super	1550	886	545	1449	774	413	1434	751	1	-	501	3	40	463
44102	Köln Super	1700	886	545	1599	774	413	1584	751	1	-	539	4	44	511
44104	Köln Super	1884	886	545	1783	774	413	1768	751	1	-	586	4	50	570
44107	Köln Super **	1884	975	559	1783	863	403	1768	845	1	-	696	4	55	620
44108	Köln Super **	1884	975	696	1783	863	540	1768	845	1	-	790	4	55	831
44110	Köln Super **	1884	1128	559	1783	1016	403	1768	998	1	-	785	4	65	730
44111	Köln Super **	1884	1128	696	1783	1016	540	1768	998	1	-	846	4	65	978
44112	Köln Super **	1884	1282	459	1783	1170	303	1768	1152	1	-	833	4	75	632
44113	Köln Super **	1884	1282	559	1783	1170	403	1768	1152	1	-	880	4	75	841
44114	Köln Super **	1884	1282	696	1783	1170	540	1768	1152	1	-	945	4	75	1126

* excluding hinges, handles and fittings ** 2-door



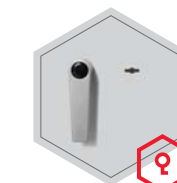
Body: multi-walled body 50 mm thick



Door: multi-walled door construction 95 mm thick

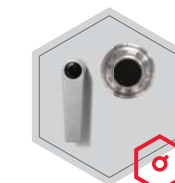
Closure options

Standard option

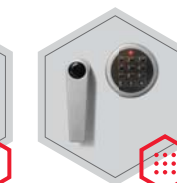


Key lock

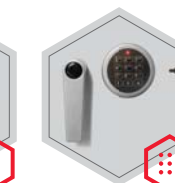
Options available against surcharge



Mechanical code lock

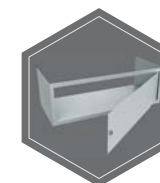


Electronic lock



Electronic lock with mechanical emergency (Excl. 44106, 44107, 44108)

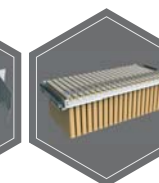
Accessories available against surcharge



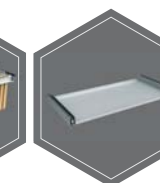
Inner safe



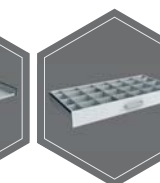
Inner safe with partition wall, 2 - door



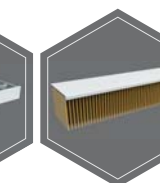
Extensible file frame



Extendable shelf



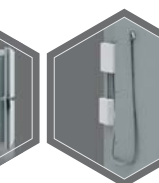
Extendable drawer for individual arrangement



Shelf for hanging files



Floppy disk insert S60DIS



Prepared for alarm system / alarm system



All information concerning weight, color and dimensions are noncommittal and subject to errors and changes. Minor deviations are conditional on the production process. Technical changes, modifications and printing errors reserved. Safes may be top-heavy, during commissioning, please exercise appropriate caution in accordance with the installation guide. Pictograms are not technical description of the product.

Model
Köln Office



Security level: Class 0 according to EN 1143-1
Fire rating: Fire-protected safes according to EN 1047-1 S 60 P

The safe has been approved in accordance with EN 1047-1 in fire class 60 P. The certification was awarded by VdS they have fire and impact tests.

Suitable for the storage of:

- office documents, office equipment
- valuables
- gun (see additional accessories)

Description

Series Köln Office - the safes with one-hour protection from fire S 60 P.

Body: multi-walled body (50 mm thick)

Door: multi-walled door construction (95 mm thick)

Locking: 4-way locking bolt system - incl. fix bolts on the hinge side

Standard option

Lock: high security key lock I class VdS with two keys (120 mm)

Boltwork handle: handle, protruding 60 mm

Hinges: external

Door opening angle: 180°

Mounting holes: 1 hole in the floor

Colour: RAL 7035 (light grey)

Model
Köln Office

Art. No.	Model	Outer dimensions*			Inner dimensions			Door light		Anchoring		Weight Kg	Shelves Number	Files Number	Volume Liters
		Height mm	Width mm	Depth mm	Height mm	Width mm	Depth mm	Height mm	Width mm	Bottom number	Backwall number				
44200	Köln Office **	901	975	459	800	863	303	785	845	1	-	367	1	24	209
44201	Köln Office **	901	975	559	800	863	403	785	845	1	-	390	1	24	278
44202	Köln Office **	901	1128	459	800	1016	303	785	998	1	-	398	1	29	246
44204	Köln Office **	901	1282	459	800	1170	303	785	1152	1	-	439	1	33	284
44207	Köln Office **	1045	1128	506	944	1016	350	929	998	1	-	456	2	35	336
44208	Köln Office **	1045	1282	506	944	1170	350	929	1152	1	-	501	2	39	387
44209	Köln Office **	1189	975	459	1088	863	303	1073	845	1	-	429	2	33	285
44211	Köln Office **	1189	1128	459	1088	1016	303	1073	998	1	-	477	2	39	335
44213	Köln Office **	1189	1282	459	1088	1170	303	1073	1152	1	-	526	2	45	386
44214	Köln Office **	1189	1282	559	1088	1170	403	1073	1152	1	-	569	2	45	513

* excluding hinges, handles and fittings ** 2-door



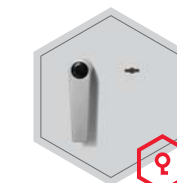
Body: multi-walled body 50 mm thick



Door: multi-walled door construction 95 mm thick

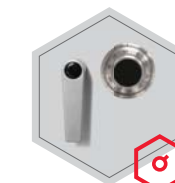
Closure options

Standard option

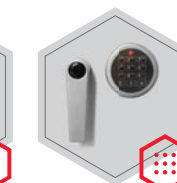


Key lock

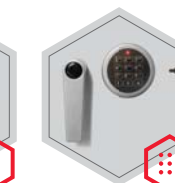
Options available against surcharge



Mechanical code lock



Electronic lock

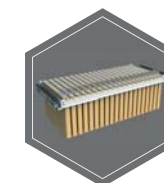


Electronic lock with mechanical emergency (Excl. 44200, 44201, 44206, 44209, 44210)

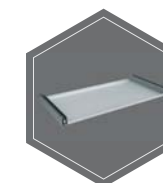
Accessories available against surcharge



Inner safe



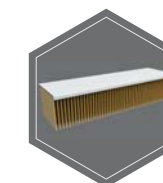
Extensible file frame



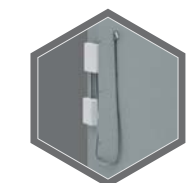
Extendable shelf



Extendable drawer for individual arrangement



Shelf for hanging files



Prepared for alarm system/ alarm system



All information concerning weight, color and dimensions are noncommittal and subject to errors and changes. Minor deviations are conditional on the production process. Technical changes, modifications and printing errors reserved. Safes may be top-heavy, during commissioning, please exercise appropriate caution in accordance with the installation guide. Pictograms are not technical description of the product.

Model
Wuppertal



Security level: Class I according to EN 1143-1
Fire rating: Fire-protected safes according to EN 1047-1 S 60 P

The safe has been approved in accordance with EN 1047-1 in fire class 60 P. The certification was awarded by VdS they have fire and impact tests.

Suitable for the storage of:

- office documents, office equipment
- valuables
- gun (see additional accessories)

Description

Series Wuppertal - the safes with one-hour protection from fire S 60 P.

- Body:** multi-walled body (50 mm thick)
- Door:** multi-walled door construction (105 mm thick)
- Locking:** 4-way locking bolt system - incl. fix bolts on the hinge side

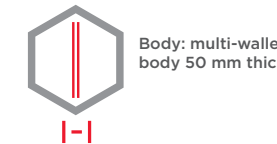
Standard option

- Lock:** high security key lock I class VdS with two keys (120 mm)
- Boltwork handle:** handle, protruding 60 mm
- Hinges:** external
- Door opening angle:** 180°
- Mounting holes:** 1 hole in the floor
- Colour:** RAL 7035 (light grey)

Model
Wuppertal

Art. No.	Model	Outer dimensions*			Inner dimensions			Door light		Anchoring		Weight Kg	Shelves Number	Files Number	Volume Liters
		Height mm	Width mm	Depth mm	Height mm	Width mm	Depth mm	Height mm	Width mm	Bottom number	Backwall number				
44500	Wuppertal	379	589	471	278	477	329	263	454	1	-	128	1	3**	44
44501	Wuppertal	482	589	471	381	477	329	366	454	1	-	144	1	6	60
44502	Wuppertal	615	589	471	514	477	329	499	454	1	-	170	2	8	81
44503	Wuppertal	801	589	471	700	477	329	685	454	1	-	215	2	12	110
44504	Wuppertal	1137	704	471	1036	592	329	1021	569	1	-	330	3	21	202
44505	Wuppertal	1322	704	471	1221	592	329	1206	569	1	-	365	3	23	238
44506	Wuppertal	1507	704	471	1406	592	329	1391	569	1	-	395	3	28	274
44507	Wuppertal	380	463	440	279	351	298	264	328	1	-	105	1	3**	29
44508	Wuppertal	440	463	440	339	351	298	324	328	1	-	115	1	4	35
44509	Wuppertal	615	463	440	514	351	298	499	328	1	-	145	2	6	54
44510	Wuppertal	775	463	440	674	351	298	659	328	1	-	165	2	8	70

* excluding hinges, handles and fittings ** crosswise

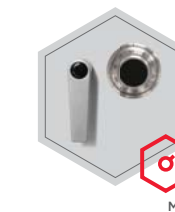


Closure options

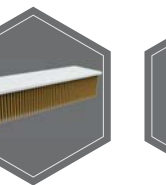
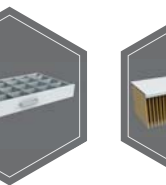
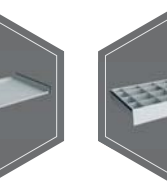
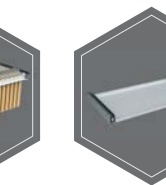
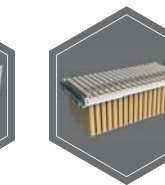
Standard option



Options available against surcharge



Accessories available against surcharge



All information concerning weight, color and dimensions are noncommittal and subject to errors and changes. Minor deviations are conditional on the production process. Technical changes, modifications and printing errors reserved. Safes may be top-heavy, during commissioning, please exercise appropriate caution in accordance with the installation guide. Pictograms are not technical description of the product.

Model Wuppertal Super



Security level: Class I according to EN 1143-1
Fire rating: Fire-protected safes according to EN 1047-1 S 60 P

The safe has been approved in accordance with EN 1047-1 in fire class 60 P. The certification was awarded by VdS they have fire and impact tests.

Suitable for the storage of:

- office documents, office equipment
- valuables
- gun (see additional accessories)

Description

Series Wuppertal Super - the safes with one-hour protection from fire S 60 P.

Body: multi-walled body (50 mm thick)
Door: multi-walled door construction (105 mm thick)
Locking: 4-way locking bolt system - incl. fix bolts on the hinge side

Standard option

Lock: high security key lock I class VdS with two keys (120 mm)
Boltwork handle: handle, protruding 60 mm
Hinges: external
Door opening angle: 180°
Mounting holes: 1 hole in the floor
Colour: RAL 7035 (light grey)



Model Wuppertal Super

Art. No.	Model	Outer dimensions*			Inner dimensions			Door light		Anchoring		Weight Kg	Shelves Number	Files Number	Volume Liters
		Height mm	Width mm	Depth mm	Height mm	Width mm	Depth mm	Height mm	Width mm	Bottom number	Backwall number				
44600	Wuppertal Super	1550	886	545	1449	774	403	1434	751	1	-	509	3	40	452
44602	Wuppertal Super	1700	886	545	1599	774	403	1584	751	1	-	547	4	44	499
44604	Wuppertal Super	1884	886	545	1783	774	403	1768	751	1	-	605	4	50	556
44607	Wuppertal Super **	1884	975	559	1783	863	393	1768	845	1	-	701	4	55	605
44608	Wuppertal Super **	1884	975	696	1783	863	530	1768	845	1	-	795	4	55	816
44610	Wuppertal Super **	1884	1128	559	1783	1016	393	1768	998	1	-	790	4	65	712
44611	Wuppertal Super **	1884	1128	696	1783	1016	530	1768	998	1	-	851	4	65	960
44612	Wuppertal Super **	1884	1282	459	1783	1170	293	1768	1152	1	-	839	4	75	611
44613	Wuppertal Super **	1884	1282	559	1783	1170	393	1768	1152	1	-	886	4	75	820
44614	Wuppertal Super **	1884	1282	696	1783	1170	530	1768	1152	1	-	951	4	75	1106

* excluding hinges, handles and fittings ** 2-door



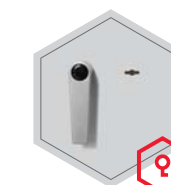
Body: multi-walled body 50 mm thick



Door: multi-walled door construction 105 mm thick

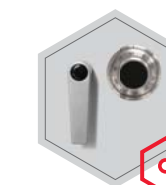
Closure options

Standard option

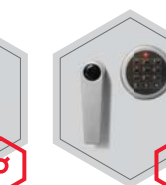


Key lock

Options available against surcharge



Mechanical code lock



Electronic lock

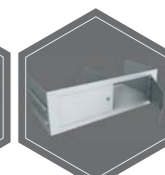


Electronic lock with mechanical emergency (Excl. 44606-44608)

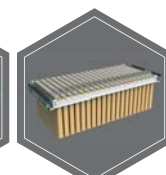
Accessories available against surcharge



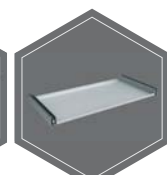
Inner safe



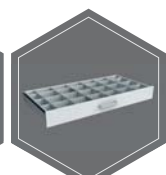
Inner safe with partition wall, 2 - door



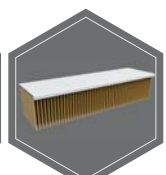
Extensible file frame



Extendable shelf



Extendable drawer for individual arrangement



Shelf for hanging files



Floppy disk insert S60DIS



Prepared for alarm system / alarm system



All information concerning weight, color and dimensions are noncommittal and subject to errors and changes. Minor deviations are conditional on the production process. Technical changes, modifications and printing errors reserved. Safes may be top-heavy, during commissioning, please exercise appropriate caution in accordance with the installation guide. Pictograms are not technical description of the product.

Model Wuppertal Office



Security level: Class I according to EN 1143-1
Fire rating: Fire-protected safes according to EN 1047-1 S 60 P

The safe has been approved in accordance with EN 1047-1 in fire class 60 P. The certification was awarded by VdS they have fire and impact tests.

- Suitable for the storage of:
- office documents, office equipment
 - valuables
 - gun (see additional accessories)

Description
 Series Wuppertal Office - the safes with one-hour protection from fire S 60 P.

Body: multi-walled body (50 mm thick)
Door: multi-walled door construction (105 mm thick)
Locking: 4-way locking bolt system - incl. fix bolts on the hinge side

Standard option
Lock: high security key lock I class VdS with two keys (120 mm)
Boltwork handle: handle, protruding 60 mm
Hinges: external
Door opening angle: 180°
Mounting holes: 1 hole in the floor
Colour: RAL 7035 (light grey)

Model Wuppertal Office

Art. No.	Model	Outer dimensions*			Inner dimensions			Door light		Anchoring		Weight Kg	Shelves Number	Files Number	Volume Liters
		Height mm	Width mm	Depth mm	Height mm	Width mm	Depth mm	Height mm	Width mm	Bottom number	Backwall number				
44650	Wuppertal Office **	901	975	459	800	863	293	785	845	1	-	375	1	24	202
44652	Wuppertal Office **	901	1128	459	800	1016	293	785	998	1	-	406	1	29	238
44654	Wuppertal Office **	901	1282	459	800	1170	293	785	1152	1	-	447	1	33	274
44657	Wuppertal Office **	1045	1128	506	944	1016	340	929	998	1	-	464	2	35	326
44658	Wuppertal Office **	1045	1282	506	944	1170	340	929	1152	1	-	510	2	39	376
44660	Wuppertal Office **	1189	975	559	1088	863	393	1073	845	1	-	475	2	33	369
44661	Wuppertal Office **	1189	1128	459	1088	1016	293	1073	998	1	-	486	2	39	324
44662	Wuppertal Office **	1189	1128	559	1088	1016	393	1073	998	1	-	526	2	39	434
44663	Wuppertal Office **	1189	1282	459	1088	1170	293	1073	1152	1	-	535	2	45	373
44664	Wuppertal Office **	1189	1282	559	1088	1170	393	1073	1152	1	-	578	2	45	500

* excluding hinges, handles and fittings ** 2-door



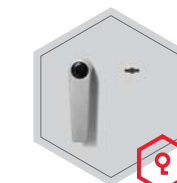
Body: multi-walled body 50 mm thick



Door: multi-walled door construction 105 mm thick

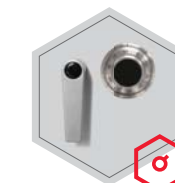
Closure options

Standard option

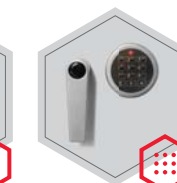


Key lock

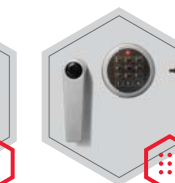
Options available against surcharge



Mechanical code lock



Electronic lock

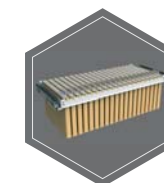


Electronic lock with mechanical emergency (Excl. 44650, 44651, 44656, 44659, 44660)

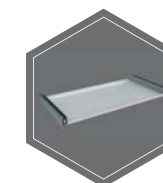
Accessories available against surcharge



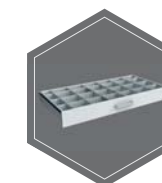
Inner safe



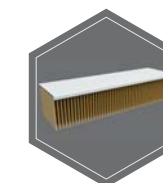
Extensible file frame



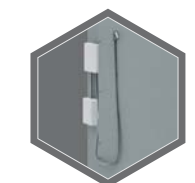
Extendable shelf



Extendable drawer for individual arrangement



Shelf for hanging files



Prepared for alarm system/ alarm system



All information concerning weight, color and dimensions are noncommittal and subject to errors and changes. Minor deviations are conditional on the production process. Technical changes, modifications and printing errors reserved. Safes may be top-heavy, during commissioning, please exercise appropriate caution in accordance with the installation guide. Pictograms are not technical description of the product.

Model
Wien



Security level: Class II according to EN 1143-1
Fire rating: Fire-protected safes according to EN 1047-1 S 60 P

The safe has been approved in accordance with EN 1047-1 in fire class 60 P. The certification was awarded by VdS they have fire and impact tests.

Suitable for the storage of:

- office documents, office equipment
- valuables
- gun (see additional accessories)

Description

Series Wien - the safes with one-hour protection from fire S 60 P.

Body: multi-walled body (62 mm thick)
Door: multi-walled door construction (114 mm thick)
Locking: 4-way locking bolt system - incl. fix bolts on the hinge side

Standard option

Lock: high security key lock I class VdS with two keys (120 mm)
Boltwork handle: handle, protruding 60 mm
Hinges: external
Door opening angle: 180°
Mounting holes: 1 hole in the floor
Colour: RAL 7035 (light grey)



Model
Wien

Art. No.	Model	Outer dimensions*			Inner dimensions			Door light		Anchoring		Weight Kg	Shelves Number	Files Number	Volume Liters
		Height mm	Width mm	Depth mm	Height mm	Width mm	Depth mm	Height mm	Width mm	Bottom number	Backwall number				
44700	Wien	503	595	497	364	459	319	358	454	1	-	186	1	6	53
44701	Wien	635	595	497	496	459	319	490	454	1	-	230	2	8	72
44702	Wien	822	595	497	683	459	319	677	454	1	-	280	2	12	100
44703	Wien	1158	710	497	1019	574	319	1013	569	1	-	420	3	18	186
44704	Wien	1343	710	497	1204	574	319	1198	569	1	-	451	3	22	220
44705	Wien	1528	710	497	1389	574	319	1383	569	1	-	520	3	28	253

* excluding hinges, handles and fittings



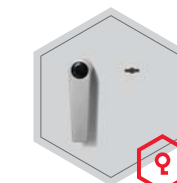
Body: multi-walled body 62 mm thick



Door: multi-walled door construction 114 mm thick

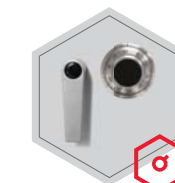
Closure options

Standard option

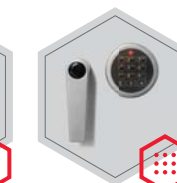


Key lock

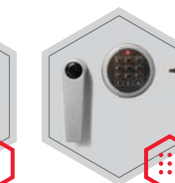
Options available against surcharge



Mechanical code lock



Electronic lock

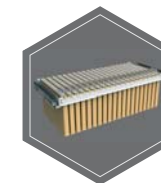


Electronic lock with mechanical emergency

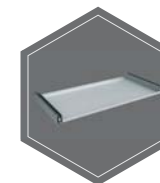
Accessories available against surcharge



Inner safe



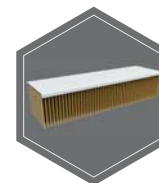
Extensible file frame



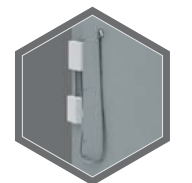
Extendable shelf



Extendable drawer for individual arrangement



Shelf for hanging files



Prepared for alarm system/ alarm system



All information concerning weight, color and dimensions are noncommittal and subject to errors and changes. Minor deviations are conditional on the production process. Technical changes, modifications and printing errors reserved. Safes may be top-heavy, during commissioning, please exercise appropriate caution in accordance with the installation guide. Pictograms are not technical description of the product.

Model
Wien Super



Security level: Class II according to EN 1143-1
Fire rating: Fire-protected safes according to EN 1047-1 S 60 P

The safe has been approved in accordance with EN 1047-1 in fire class 60 P. The certification was awarded by VdS they have fire and impact tests.

Suitable for the storage of:

- office documents, office equipment
- valuables
- gun (see additional accessories)

Description

Series Wien Super - the safes with one-hour protection from fire S 60 P.

Body: multi-walled body (62 mm thick)
Door: multi-walled door construction (114 mm thick)
Locking: 4-way locking bolt system - incl. fix bolts on the hinge side

Standard option

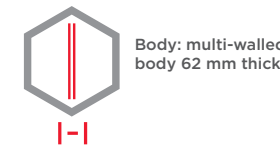
Lock: high security key lock I class VdS with two keys (120 mm)
Boltwork handle: handle, protruding 60 mm
Hinges: external
Door opening angle: 180°
Mounting holes: 1 hole in the floor
Colour: RAL 7035 (light grey)



Model
Wien Super

Art. No.	Model	Outer dimensions*			Inner dimensions			Door light		Anchoring		Weight Kg	Shelves Number	Files Number	Volume Liters
		Height mm	Width mm	Depth mm	Height mm	Width mm	Depth mm	Height mm	Width mm	Bottom number	Backwall number				
44751	Wien Super	1589	892	571	1450	756	393	1444	751	1	-	655	3	42	431
44753	Wien Super	1739	892	571	1600	756	393	1594	751	1	-	707	4	46	475
44755	Wien Super	1905	892	571	1766	756	393	1760	751	1	-	765	4	50	525
44756	Wien Super	1905	892	497	1766	756	319	1760	751	1	-	713	4	50	426
44758	Wien Super **	1905	999	580	1766	863	392	1760	858	1	-	935	4	55	597
44759	Wien Super **	1905	999	717	1766	863	529	1760	858	1	-	1049	4	70	806
44761	Wien Super **	1905	1252	580	1766	1116	392	1760	1111	1	-	1063	4	70	772
44762	Wien Super **	1905	1252	717	1766	1116	529	1760	1111	1	-	1187	4	75	1042
44764	Wien Super **	1905	1288	580	1766	1152	392	1760	1147	1	-	1082	4	75	797
44765	Wien Super **	1905	1288	717	1766	1152	529	1760	1147	1	-	1207	4	75	1076

* excluding hinges, handles and fittings ** 2-door

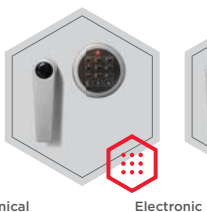


Closure options

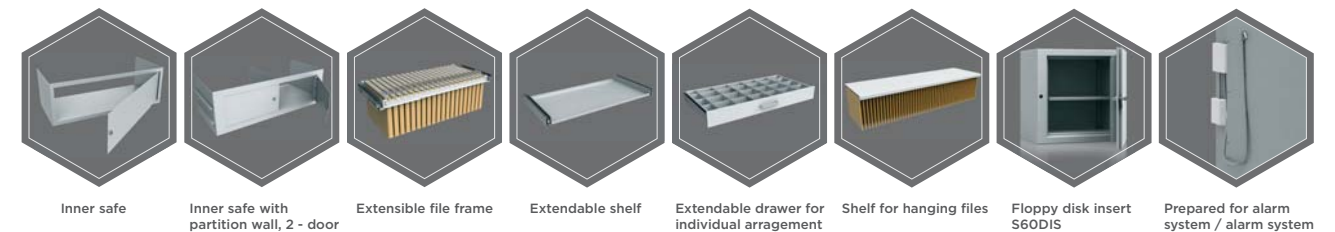
Standard option



Options available against surcharge



Accessories available against surcharge



All information concerning weight, color and dimensions are noncommittal and subject to errors and changes. Minor deviations are conditional on the production process. Technical changes, modifications and printing errors reserved. Safes may be top-heavy, during commissioning, please exercise appropriate caution in accordance with the installation guide. Pictograms are not technical description of the product.

Model
Hamburg



Security level: Class S2 according to EN 14450
Security level: B according to VDMA 24992 - Conditions May'95
Fire rating: Fire-protected safes according to EN 1047-1 S 120 P

The safe has been approved in accordance with EN 1047-1 in fire class 120 P. The certification was awarded by VdS they have fire and impact tests.

Suitable for the storage of:
 office documents, office equipment
 gun (see additional accessories)

Description
 Series Hamburg - the safes with two-hour protection from fire S 120 P.

Body: double-walled body (72 mm thick)
Door: multi-walled door construction (132 mm thick)
Locking: 4-way locking bolt system

Standard option
Lock: high security key lock I class VdS with two keys (120 mm)
Boltwork handle: handle, protruding 60 mm
Hinges: external
Door opening angle: 180°
Mounting holes: 2 hole in the floor
Colour: RAL 7035 (light grey)



Model
Hamburg

Art. No.	Model	Outer dimensions*			Inner dimensions			Door light		Anchoring		Weight Kg	Shelves Number	Files Number	Volume Liters
		Height mm	Width mm	Depth mm	Height mm	Width mm	Depth mm	Height mm	Width mm	Bottom number	Backwall number				
45000	Hamburg	489	605	560	273	448	358	252	418	2	-	168	1	3 ***	44
45001	Hamburg	590	605	560	374	448	358	353	418	2	-	187	1	6	60
45002	Hamburg	1050	605	560	769	448	368	730	385	2	-	323	2	12	126
45003	Hamburg	1400	794	560	1109	637	358	1063	557	2	-	483	2	24	253
45004	Hamburg	1600	794	560	1309	637	358	1263	557	2	-	577	3	26	298
45005	Hamburg	1800	794	560	1509	637	358	1463	557	2	-	708	3	33	344
45006	Hamburg **	1800	1350	560	1504	1193	358	1453	1103	2	-	995	3	67	642

* excluding hinges, handles and fittings ** 2-door *** crosswise



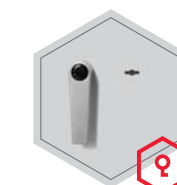
Body: double-walled body 72 mm thick



Door: multi-walled door construction 132 mm thick

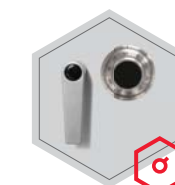
Closure options

Standard option

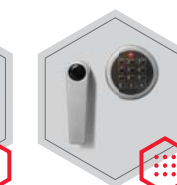


Key lock

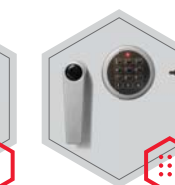
Options available against surcharge



Mechanical code lock



Electronic lock

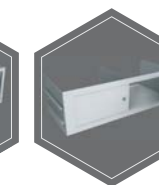


Electronic lock with mechanical emergency

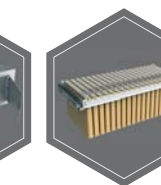
Accessories available against surcharge



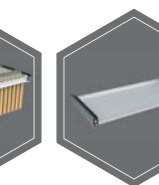
Inner safe



Inner safe with partition wall, 2 - door



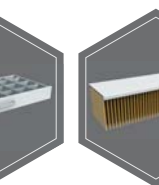
Extensible file frame



Extendable shelf



Extendable drawer for individual arrangement



Shelf for hanging files



Floppy disk insert S60DIS



All information concerning weight, color and dimensions are noncommittal and subject to errors and changes. Minor deviations are conditional on the production process. Technical changes, modifications and printing errors reserved. Safes may be top-heavy, during commissioning, please exercise appropriate caution in accordance with the installation guide. Pictograms are not technical description of the product.

Model
Hamburg Super



Security level: Class S2 according to EN 14450
Security level: B according to VDMA 24992 - Conditions May'95
Fire rating: Fire-protected safes according to EN 1047-1 S 120 P

The safe has been approved in accordance with EN 1047-1 in fire class 120 P. The certification was awarded by VdS they have fire and impact tests.

Suitable for the storage of:
 office documents, office equipment
 gun (see additional accessories)

Description
 Series Hamburg Super - the safes with two-hour protection from fire S 120 P.

Body: double-walled body (72 mm thick)
Door: multi-walled door construction (132 mm thick)
Locking: 4-way locking bolt system

Standard option
Lock: high security key lock I class VdS with two keys (120 mm)
Boltwork handle: handle, protruding 60 mm
Hinges: external
Door opening angle: 180°
Mounting holes: 2 holes in the floor
Colour: RAL 7035 (light grey)

Model
Hamburg Super

Art. No.	Model	Outer dimensions*			Inner dimensions			Door light		Anchoring		Weight Kg	Shelves Number	Files Number	Volume Liters
		Height mm	Width mm	Depth mm	Height mm	Width mm	Depth mm	Height mm	Width mm	Bottom number	Backwall number				
45100	Hamburg Super **	1800	1766	560	1504	1609	358	1453	1519	2	-	1215	2 x 4	84	867
45101	Hamburg Super **	2033	1766	560	1737	1609	358	1686	1519	2	-	1340	2 x 4	94	1001

* excluding hinges, handles and fittings ** 2-door



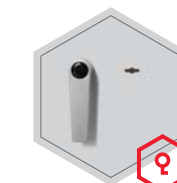
Body: double-walled body 72 mm thick



Door: multi-walled door construction 132 mm thick

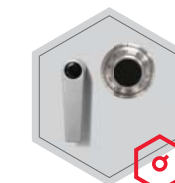
Closure options

Standard option

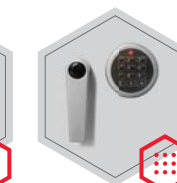


Key lock

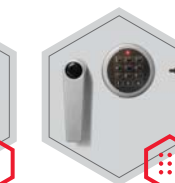
Options available against surcharge



Mechanical code lock

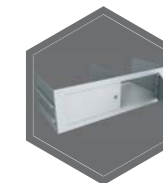


Electronic lock

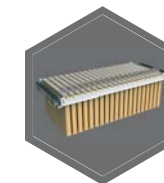


Electronic lock with mechanical emergency

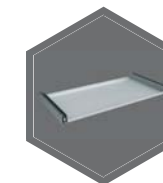
Accessories available against surcharge



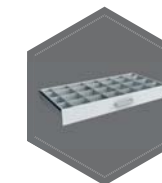
Inner safe with partition wall, 2 - door



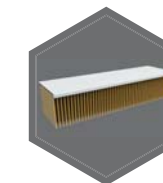
Extensible file frame



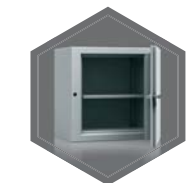
Extendable shelf



Extendable drawer for individual arrangement



Shelf for hanging files



Floppy disk insert S60DIS



All information concerning weight, color and dimensions are noncommittal and subject to errors and changes. Minor deviations are conditional on the production process. Technical changes, modifications and printing errors reserved. Safes may be top-heavy, during commissioning, please exercise appropriate caution in accordance with the installation guide. Pictograms are not technical description of the product.

Model
Berlin



Security level: Class I according to EN 1143-1
Fire rating: Fire-protected safes according to EN 1047-1 S 120 P

The safe has been approved in accordance with EN 1047-1 in fire class 120 P. The certification was awarded by VdS they have fire and impact tests.

Suitable for the storage of:

- office documents, office equipment
- valuables
- gun (see additional accessories)

Description
Series Berlin - the safes with two-hour protection from fire S 120 P.

Body: multi-walled body (72 mm thick)
Door: multi-walled door construction (132 mm thick)
Locking: 4-way locking bolt system

Standard option
Lock: high security key lock I class VdS with two keys (120 mm)
Boltwork handle: handle, protruding 60 mm
Hinges: external
Door opening angle: 180°
Mounting holes: 1 (2) hole in the floor
Colour: RAL 7035 (light grey)

Model
Berlin

Art. No.	Model	Outer dimensions*			Inner dimensions			Door light		Anchoring		Weight Kg	Shelves Number	Files Number	Volume Liters
		Height mm	Width mm	Depth mm	Height mm	Width mm	Depth mm	Height mm	Width mm	Bottom number	Backwall number				
46000	Berlin	489	605	560	273	448	358	252	418	1	-	178	1	3 ***	44
46001	Berlin	590	605	560	374	448	358	353	418	1	-	198	1	6	60
46002	Berlin	1050	605	560	769	448	368	730	385	1	-	335	2	12	126
46003	Berlin	1400	794	560	1109	637	358	1063	557	1	-	497	2	24	253
46004	Berlin	1600	794	560	1309	637	358	1263	557	1	-	593	3	26	298
46005	Berlin	1800	794	560	1509	637	358	1463	557	1	-	728	3	33	344
46006	Berlin **	1800	1350	560	1504	1193	358	1453	1103	2	-	1025	3	67	642

* excluding hinges, handles and fittings ** 2-door *** crosswise



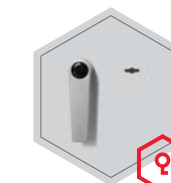
Body: multi-walled body 72 mm thick



Door: multi-walled door construction 132 mm thick

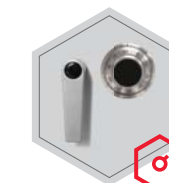
Closure options

Standard option



Key lock

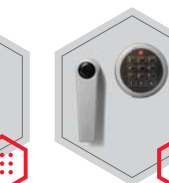
Options available against surcharge



Mechanical code lock



Electronic lock

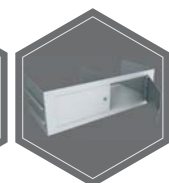


Electronic lock with mechanical emergency (Excl. 46000)

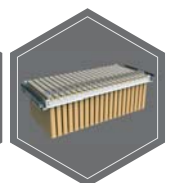
Accessories available against surcharge



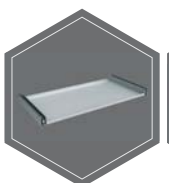
Inner safe



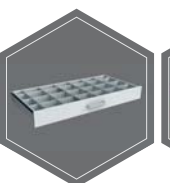
Inner safe with partition wall, 2 - door



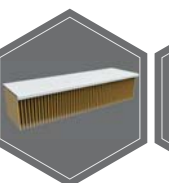
Extensible file frame



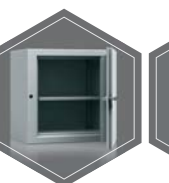
Extendable shelf



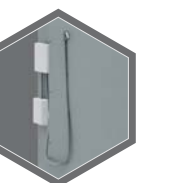
Extendable drawer for individual arrangement



Shelf for hanging files



Floppy disk insert S60DIS



Prepared for alarm system / alarm system



All information concerning weight, color and dimensions are noncommittal and subject to errors and changes. Minor deviations are conditional on the production process. Technical changes, modifications and printing errors reserved. Safes may be top-heavy, during commissioning, please exercise appropriate caution in accordance with the installation guide. Pictograms are not technical description of the product.

Model
Berlin Super



Security level: Class I according to EN 1143-1
Fire rating: Fire-protected safes according to EN 1047-1 S 120 P

The safe has been approved in accordance with EN 1047-1 in fire class 120 P. The certification was awarded by VdS they have fire and impact tests.

- Suitable for the storage of:
- office documents, office equipment
 - valuables
 - gun (see additional accessories)

Description
Series Berlin Super - the safes with two-hour protection from fire S 120 P.

Body: multi-walled body (72 mm thick)
Door: multi-walled door construction (132 mm thick)
Locking: 4-way locking bolt system

Standard option
Lock: high security key lock I class VdS with two keys (120 mm)
Boltwork handle: handle, protruding 60 mm
Hinges: external
Door opening angle: 180°
Mounting holes: 2 hole in the floor
Colour: RAL 7035 (light grey)

Model
Berlin Super

Art. No.	Model	Outer dimensions*			Inner dimensions			Door light		Anchoring		Weight	Shelves	Files	Volume
		Height mm	Width mm	Depth mm	Height mm	Width mm	Depth mm	Height mm	Width mm	Bottom number	Backwall number	Kg	Number	Number	Liters
46007	Berlin Super **	1800	1766	560	1504	1609	358	1453	1519	2	-	1310	2 x 4	84	867
46008	Berlin Super **	2033	1766	560	1737	1609	358	1686	1519	2	-	1460	2 x 4	94	1001

* excluding hinges, handles and fittings ** 2-door



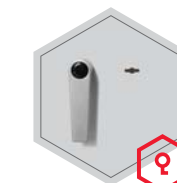
Body: multi-walled body 72 mm thick



Door: multi-walled door construction 132 mm thick

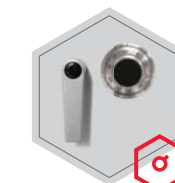
Closure options

Standard option

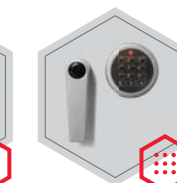


Key lock

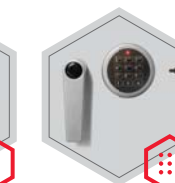
Options available against surcharge



Mechanical code lock



Electronic lock

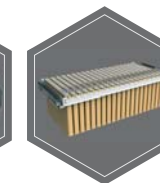


Electronic lock with mechanical emergency

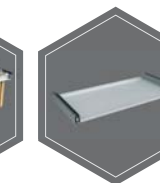
Accessories available against surcharge



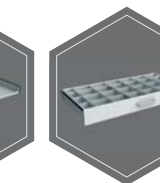
Inner safe with partition wall, 2 - door



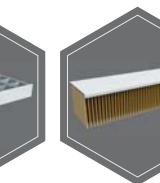
Extensible file frame



Extendable shelf



Extendable drawer for individual arrangement



Shelf for hanging files



Floppy disk insert S60DIS



Prepared for alarm system/ alarm system



All information concerning weight, color and dimensions are noncommittal and subject to errors and changes. Minor deviations are conditional on the production process. Technical changes, modifications and printing errors reserved. Safes may be top-heavy, during commissioning, please exercise appropriate caution in accordance with the installation guide. Pictograms are not technical description of the product.



Security level: Class II according to EN 1143-1
Fire rating: Fire-protected safes according to EN 1047-1 S 120 P

The safe has been approved in accordance with EN 1047-1 in fire class 120 P. The certification was awarded by VdS they have fire and impact tests.

Suitable for the storage of:

- office documents, office equipment
- valuables

Description

Series Prag - the safes with two-hour protection from fire S 120 P.

Body: multi-walled body (86 mm thick)
Door: multi-walled door construction (135 mm thick)
Locking: 4-way locking bolt system - incl. fix bolts on the hinge side

Standard option

Lock: high security key lock I class VdS with two keys (120 mm)
Boltwork handle: handle, protruding 60 mm
Hinges: external
Door opening angle: 180°
Mounting holes: 1 (2) holes in the floor
Colour: RAL 7035 (light grey)

Art. No.	Model	Outer dimensions*			Inner dimensions			Door light		Anchoring		Weight Kg	Shelves Number	Files Number	Volume Liters
		Height mm	Width mm	Depth mm	Height mm	Width mm	Depth mm	Height mm	Width mm	Bottom number	Backwall number				
46100	Prag	550	632	573	317	448	350	304	436	1	-	240	1	3 ***	50
46101	Prag	600	632	573	367	448	350	354	436	1	-	264	1	6	58
46102	Prag	1068	619	560	769	435	352	739	390	1	-	389	2	10	118
46103	Prag	1418	821	573	1110	637	350	1072	574	1	-	623	2	24	247
46104	Prag	1618	821	573	1310	637	350	1272	574	1	-	700	3	24	292
46105	Prag	1811	821	573	1503	637	350	1465	574	1	-	774	3	32	335
46106	Prag **	1821	1377	573	1507	1193	350	1465	1121	2	-	1139	3	64	613
46107	Prag **	1821	1775	573	1507	1591	350	1465	1519	2	-	1452	6	84	818
46108	Prag **	2042	1775	573	1728	1591	350	1686	1519	2	-	1605	8	105	937

* excluding hinges, handles and fittings ** 2-door *** crosswise



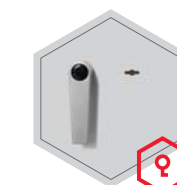
Body: multi-walled body 86 mm thick



Door: multi-walled door construction 135 mm thick

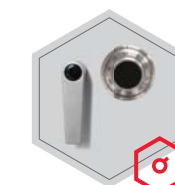
Closure options

Standard option

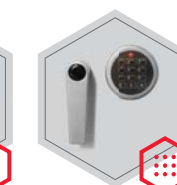


Key lock

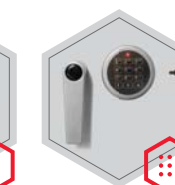
Options available against surcharge



Mechanical code lock

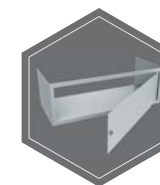


Electronic lock



Electronic lock with mechanical emergency

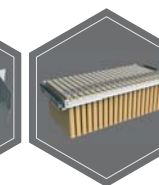
Accessories available against surcharge



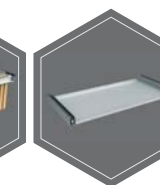
Inner safe



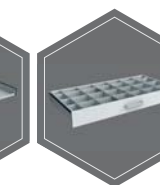
Inner safe with partition wall, 2 - door



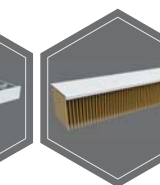
Extensible file frame



Extendable shelf



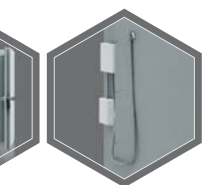
Extendable drawer for individual arrangement



Shelf for hanging files



Floppy disk insert S60DIS



Prepared for alarm system / alarm system



All information concerning weight, color and dimensions are noncommittal and subject to errors and changes. Minor deviations are conditional on the production process. Technical changes, modifications and printing errors reserved. Safes may be top-heavy, during commissioning, please exercise appropriate caution in accordance with the installation guide. Pictograms are not technical description of the product.



Art. No.	Model	Outer dimensions*			Inner dimensions			Anchoring		Weight Kg	Drawer Number	Volume Liters
		Height mm	Width mm	Depth mm	Height mm	Width mm	Depth mm	Bottom number	Backwall number			
46500	Oslo	635	540	630	400	380	397	2	-	200	3	60
46501	Oslo	635	540	755	400	380	522	2	-	225	3	79
46502	Oslo	1270	540	630	400*2	380	397	2	-	400	2*3	121
46503	Oslo	1270	540	755	400*2	380	522	2	-	450	2*3	159

* excluding hinges, handles and fittings



Body: multi-walled body 80 mm thick



Door: multi-walled door construction 151 mm thick

Security level: Class S2 according to EN 14450
Security level: A according to VDMA 24992 - Conditions May'95
Fire rating: Fire-protected safes according to EN 1047-1 S 60 DIS

The safe has been approved in accordance with EN 1047-1 in fire class 60 DIS. The certification was awarded by VdS they have fire and impact tests.

Suitable for the storage of:

- data media
- office documents, office equipment

Description

Series Oslo - the safes with one-hour protection from fire S 60 DIS.

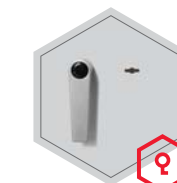
- Body: multi-walled body (80 mm thick)
- Door: multi-walled door construction (151 mm thick)
- Locking: 4-way locking bolt system

Standard option

- Lock: high security key lock I class VdS with two keys (120 mm)
- Boltwork handle: handle, protruding 60 mm
- Mounting holes: 2 holes in the floor
- Colour: RAL 7035 (light grey)

Closure options

Standard option



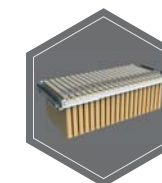
Key lock

Options available against surcharge



Electronic lock

Accessories available against surcharge

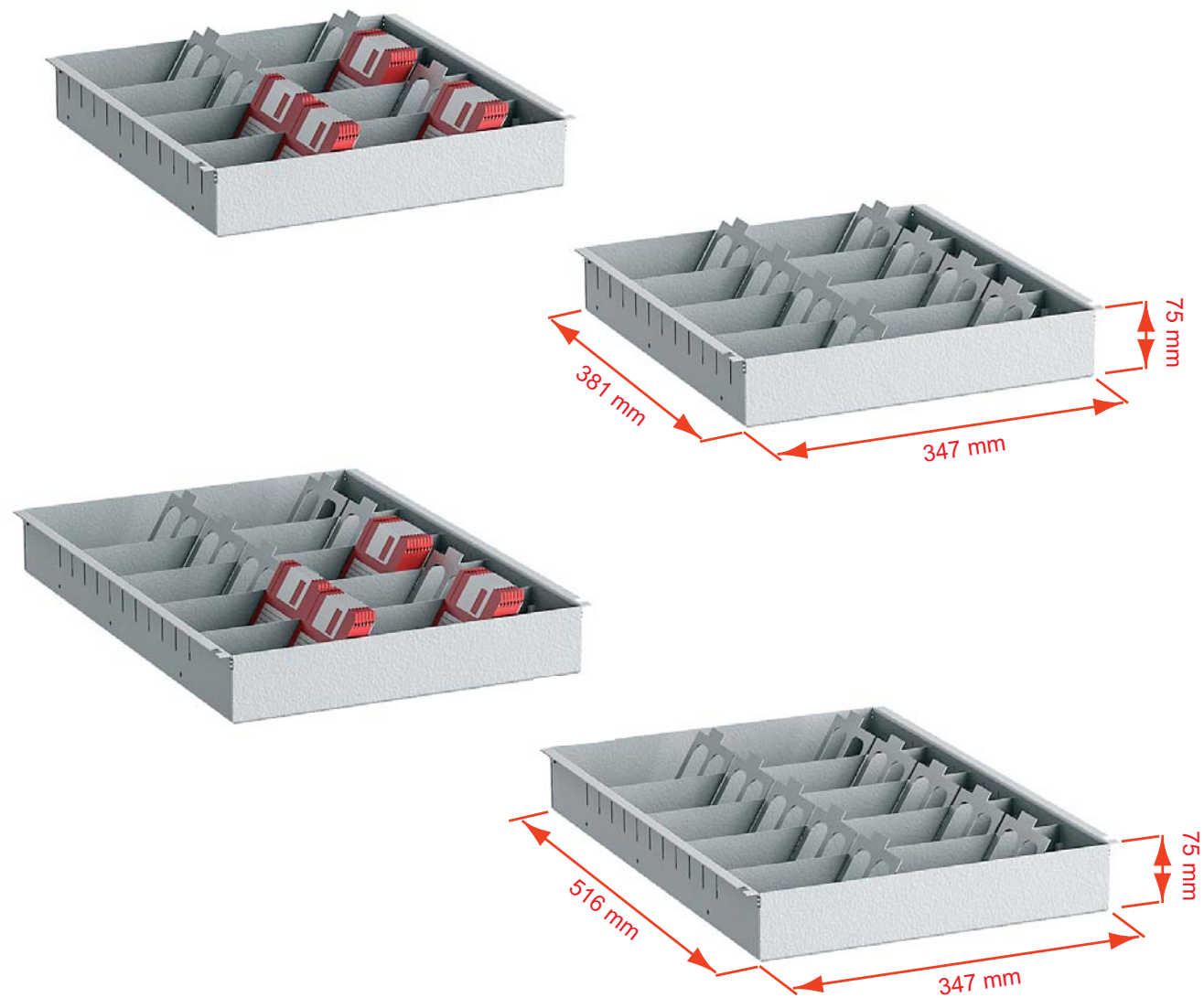


Extensible file frame



All information concerning weight, color and dimensions are noncommittal and subject to errors and changes. Minor deviations are conditional on the production process. Technical changes, modifications and printing errors reserved. Safes may be top-heavy, during commissioning, please exercise appropriate caution in accordance with the installation guide. Pictograms are not technical description of the product.

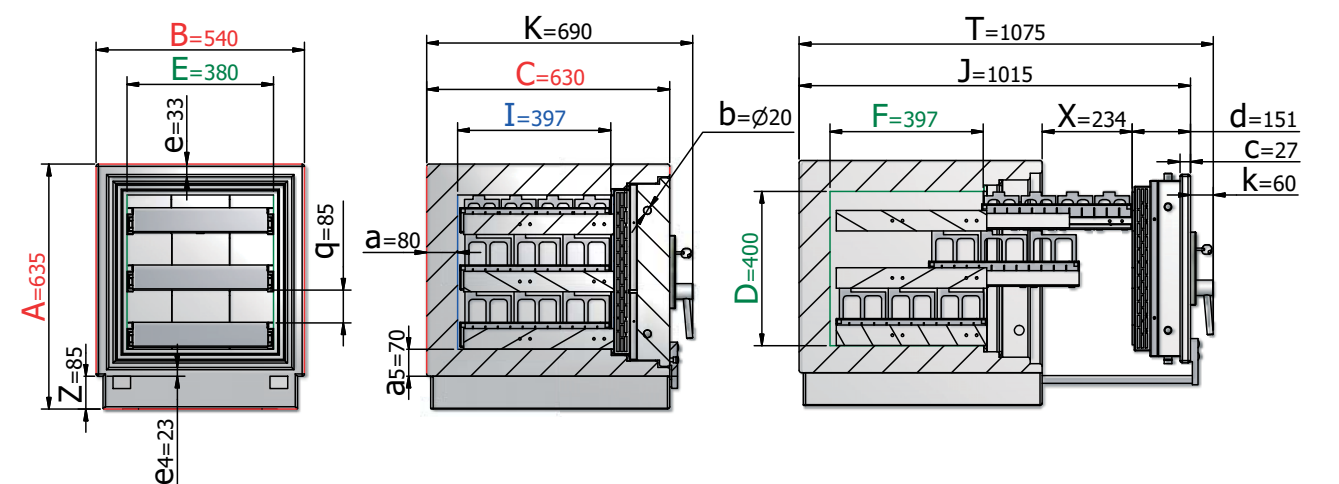
Drawer types used in Oslo model



Art. No.	Model	Drawer number	CD-ROM	Diskette 3,5"	Streamer Tape	Streamer Tape DLT	Giga Tape 4	Giga Tape 8	Optical disc 3,5"	Microfilm cassette	Megastar	LTO
			140x125x5 mm	88x88x3 mm	162x107x25 mm	112x112x32 mm	81x60x16 mm	102x68x20 mm	94x90x6 mm	100x100x25 mm	137x59x16 mm	105x102x22 mm
46500	Oslo	3	198	1188	78	87	378	187	513	105	300	126
46501	Oslo	drawers	264	1485	104	116	504	238	684	140	400	180
46502	Oslo	6	396	2376	156	174	756	374	1026	210	600	252
46503	Oslo	drawers	528	2970	208	232	1008	476	1368	280	800	360



Example of arrangement of 3 drawers in Oslo model art. no. 46500





Security level: Class S2 according to EN 14450
Security level: A according to VDMA 24992 - Conditions May'95
Fire rating: Fire-protected safes according to EN 1047-1 S 60 DIS

The safe has been approved in accordance with EN 1047-1 in fire class 60 DIS. The certification was awarded by VdS they have fire and impact tests.

Suitable for the storage of:
 data media
 office documents, office equipment

Description
 Series Bergen - the safes with one-hour protection from fire S 60 DIS.

Body: multi-walled body (80 mm thick)
Door: multi-walled door construction (151 mm thick)
Locking: 4-way locking bolt system

Standard option
Lock: high security key lock I class VdS with two keys (120 mm)
Boltwork handle: handle, protruding 60 mm
Hinges: external
Door opening angle: 180°
Mounting holes: 2 hole in the floor
Colour: RAL 7035 (light grey)

Art. No.	Model	Outer dimensions*			Inner dimensions			Door light		Anchoring		Weight	Shelves	Volume
		Height mm	Width mm	Depth mm	Height mm	Width mm	Depth mm	Height mm	Width mm	Bottom number	Backwall number	Kg	Number	Liters
46550	Bergen	635	563	630	400	368	397	400	368	2	-	197	1	58
46551	Bergen	635	563	755	400	368	522	400	368	2	-	222	1	77

* excluding hinges, handles and fittings



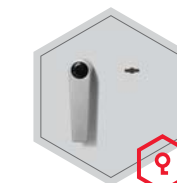
Body: multi-walled body 80 mm thick



Door: multi-walled door construction 151 mm thick

Closure options

Standard option



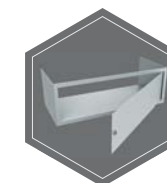
Key lock

Options available against surcharge

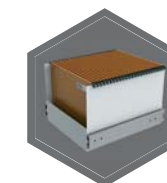


Electronic lock

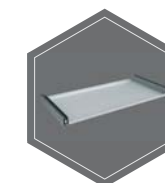
Accessories available against surcharge



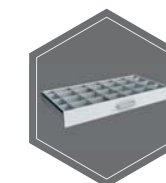
Inner safe



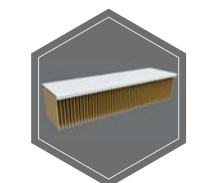
Extendable box for files



Extendable shelf



Extendable drawer for individual arrangement



Shelf for hanging files



All information concerning weight, color and dimensions are noncommittal and subject to errors and changes. Minor deviations are conditional on the production process. Technical changes, modifications and printing errors reserved. Safes may be top-heavy, during commissioning, please exercise appropriate caution in accordance with the installation guide. Pictograms are not technical description of the product.

Model
Stockholm



Security level: Class I according to EN 1143-1
Fire rating: Fire-protected safes according to EN 1047-1 S 60 DIS

The safe has been approved in accordance with EN 1047-1 in fire class 60 DIS. The certification was awarded by VdS they have fire and impact tests.

Suitable for the storage of:
 data media
 office documents, office equipment

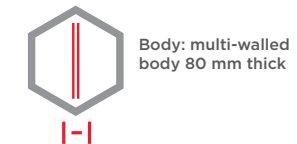
Description
Series Stockholm - the safes with one-hour protection from fire S 60 DIS.

Body: multi-walled body (80 mm thick)
Door: multi-walled door construction (151 mm thick)
Locking: 4-way locking bolt system

Standard option
Lock: high security key lock I class VdS with two keys (120 mm)
Boltwork handle: handle, protruding 60 mm
Mounting holes: 2 holes in the floor
Colour: RAL 7035 (light grey)

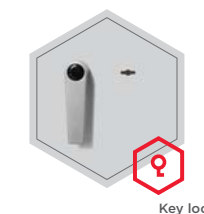
Art. No.	Model	Outer dimensions*			Inner dimensions			Anchoring		Weight Kg	Drawer Number	Volume Liters
		Height mm	Width mm	Depth mm	Height mm	Width mm	Depth mm	Bottom number	Backwall number			
46700	Stockholm	635	540	630	400	380	397	2	-	200	3	60
46701	Stockholm	635	540	755	400	380	522	2	-	225	3	79
46702	Stockholm	1270	540	630	400*2	380	397	2	-	400	2*3	121
46703	Stockholm	1270	540	755	400*2	380	522	2	-	452	2*3	159

* excluding hinges, handles and fittings



Closure options

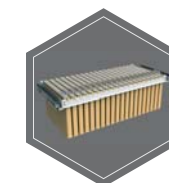
Standard option



Options available against surcharge

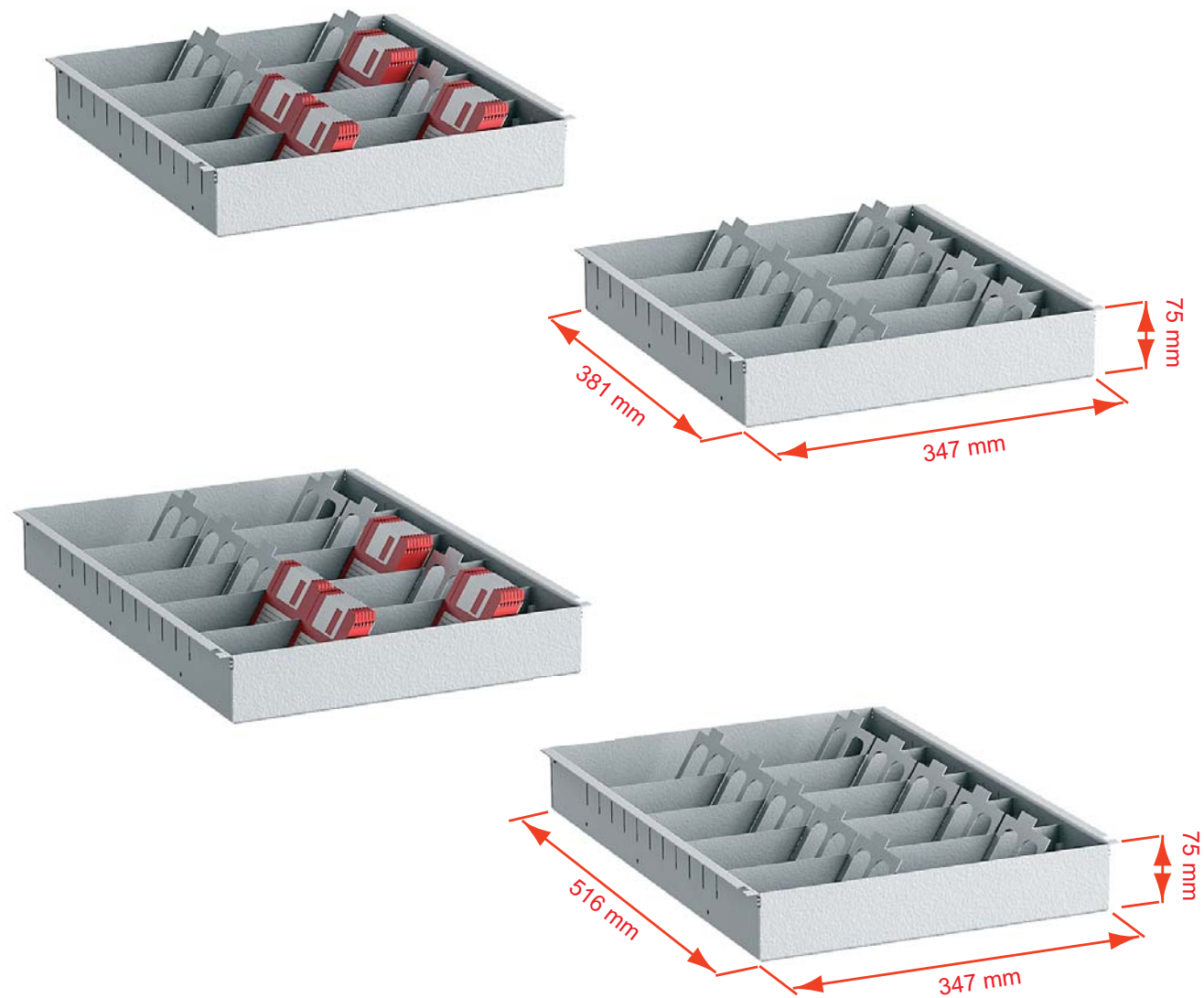


Accessories available against surcharge



All information concerning weight, color and dimensions are noncommittal and subject to errors and changes. Minor deviations are conditional on the production process. Technical changes, modifications and printing errors reserved. Safes may be top-heavy, during commissioning, please exercise appropriate caution in accordance with the installation guide. Pictograms are not technical description of the product.

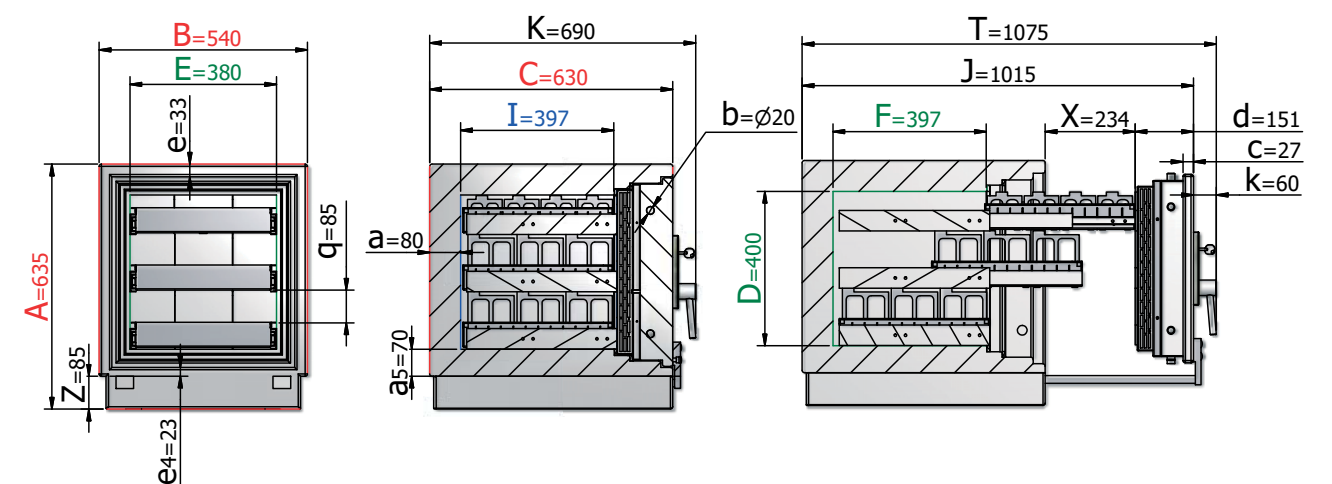
Drawer types used in Stockholm model



Art. No.	Model	Drawer number	CD-ROM	Diskette 3,5"	Streamer Tape	Streamer Tape DLT	Giga Tape 4	Giga Tape 8	Optical disc 3,5"	Microfilm cassette	Megastar	LTO
			140x125x5 mm	88x88x3 mm	162x107x25 mm	112x112x32 mm	81x60x16 mm	102x68x20 mm	94x90x6 mm	100x100x25 mm	137x59x16 mm	105x102x22 mm
46700	Stockholm	3	198	1188	78	87	378	187	513	105	300	126
46701	Stockholm	drawers	264	1485	104	116	504	238	684	140	400	180
46702	Stockholm	6	396	2376	156	174	756	374	1026	210	600	252
46703	Stockholm	drawers	528	2970	208	232	1008	476	1368	280	800	360



Example of arrangement of 3 drawers in Stockholm model art. no. 46700





Security level: Class I according to EN 1143-1
Fire rating: Fire-protected safes according to EN 1047-1 S 60 DIS

The safe has been approved in accordance with EN 1047-1 in fire class 60 DIS. The certification was awarded by VdS they have fire and impact tests.

Suitable for the storage of:
 data media
 office documents, office equipment

Description
Series Göteborg - the safes with one-hour protection from fire S 60 DIS.

Body: multi-walled body (80 mm thick)
Door: multi-walled door construction (151 mm thick)
Locking: 4-way locking bolt system

Standard option
Lock: high security key lock I class VdS with two keys (120 mm)
Boltwork handle: handle, protruding 60 mm
Hinges: external
Door opening angle: 180°
Mounting holes: 2 holes in the floor
Colour: RAL 7035 (light grey)

Art. No.	Model	Outer dimensions*			Inner dimensions			Door light		Anchoring		Weight Kg	Shelves Number	Volume Liters
		Height mm	Width mm	Depth mm	Height mm	Width mm	Depth mm	Height mm	Width mm	Bottom number	Backwall number			
46750	Göteborg	635	563	630	400	368	397	400	368	2	-	198	1	58
46751	Göteborg	635	563	755	400	368	522	400	368	2	-	223	1	77

* excluding hinges, handles and fittings



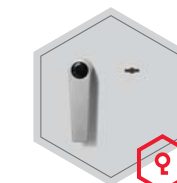
Body: multi-walled body 80 mm thick



Door: multi-walled door construction 151 mm thick

Closure options

Standard option



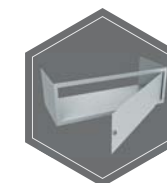
Key lock

Options available against surcharge

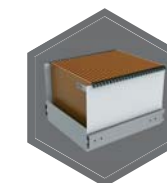


Electronic lock

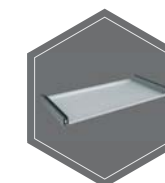
Accessories available against surcharge



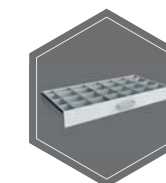
Inner safe



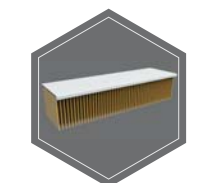
Extendable box for files



Extendable shelf



Extendable drawer for individual arrangement



Shelf for hanging files



All information concerning weight, color and dimensions are noncommittal and subject to errors and changes. Minor deviations are conditional on the production process. Technical changes, modifications and printing errors reserved. Safes may be top-heavy, during commissioning, please exercise appropriate caution in accordance with the installation guide. Pictograms are not technical description of the product.

Model
Kopenhagen



Security level: Class I according to EN 1143-1
Fire rating: Fire-protected safes according to EN 1047-1 S 120 DIS

The safe has been approved in accordance with EN 1047-1 in fire class 120 DIS. The certification was awarded by VdS they have fire and impact tests.

Suitable for the storage of:
 data media
 office documents, office equipment

Description
Series Kopenhagen - the safes with two-hour protection from fire S 120 DIS.

Body: multi-walled body (101 mm thick)
Door: multi-walled door construction (173 mm thick)
Locking: 4-way locking bolt system

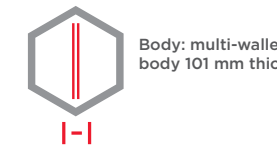
Standard option
Lock: high security key lock I class VdS with two keys (120 mm)
Boltwork handle: handle, protruding 60 mm
Mounting holes: 2 holes in the floor
Colour: RAL 7035 (light grey)



Model
Kopenhagen

Art. No.	Model	Outer dimensions*			Inner dimensions			Door light		Anchoring		Weight	Shelves	Volume
		Height mm	Width mm	Depth mm	Height mm	Width mm	Depth mm	Height mm	Width mm	Bottom number	Backwall number	Kg	Number	Liters
46760	Kopenhagen	1143	714	662	887	478	388	887	478	2	-	433	2	164
46761	Kopenhagen	1143	800	730	887	564	456	887	564	2	-	501	2	228
46762	Kopenhagen	1300	800	730	1044	564	456	1044	564	2	-	560	3	268
46763	Kopenhagen	1456	886	798	1200	650	524	1200	650	2	-	707	4	408

* excluding hinges, handles and fittings



Closure options

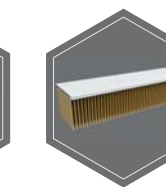
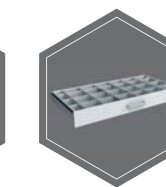
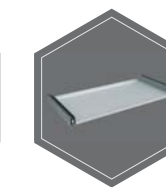
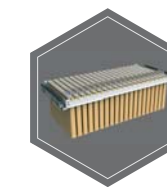
Standard option



Options available against surcharge



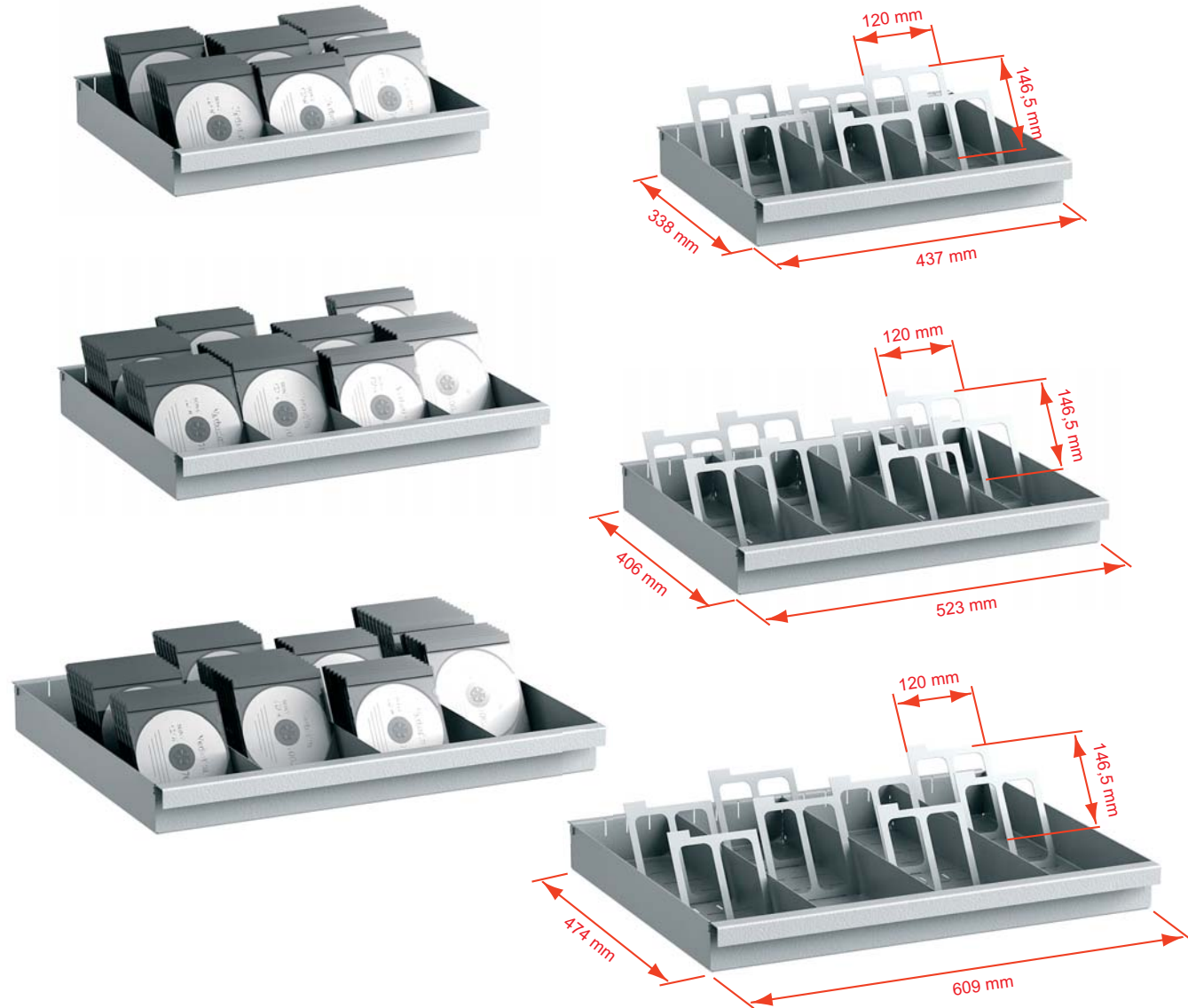
Accessories available against surcharge



All information concerning weight, color and dimensions are noncommittal and subject to errors and changes. Minor deviations are conditional on the production process. Technical changes, modifications and printing errors reserved. Safes may be top-heavy, during commissioning, please exercise appropriate caution in accordance with the installation guide. Pictograms are not technical description of the product.

Model
Kopenhagen

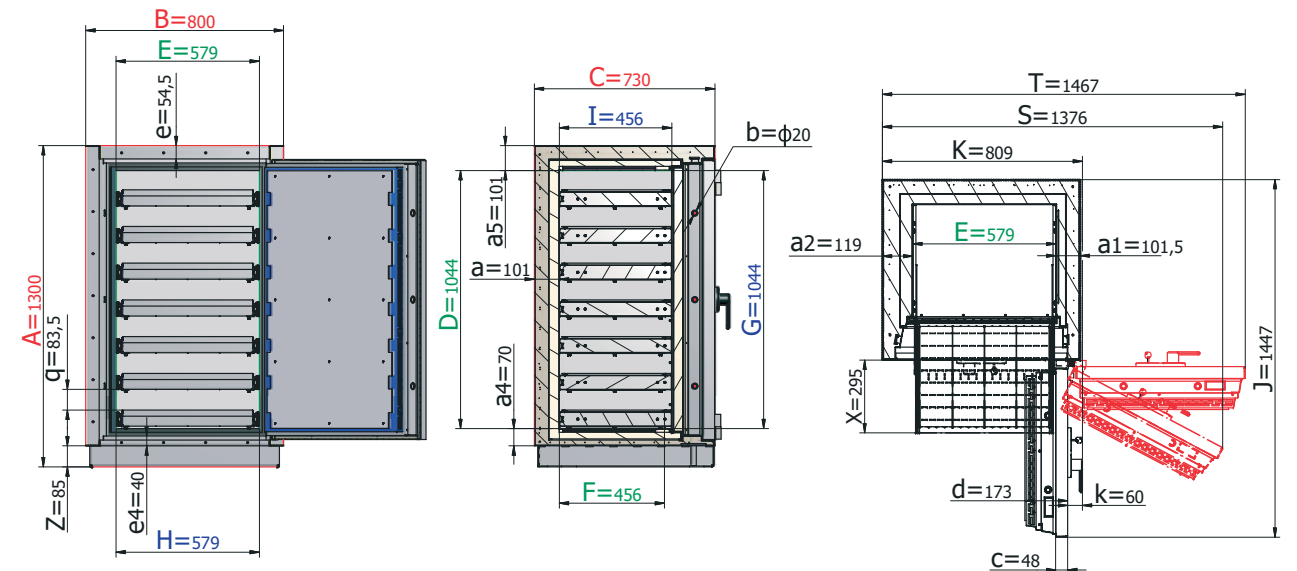
Drawer types used in Kopenhagen model



Model
Kopenhagen

Art. No.	Model	Drawer number	CD-ROM	Diskette 3,5"	Streamer Tape	Streamer Tape DLT	Giga Tape 4	Giga Tape 8	Optical disc 3,5"	Microfilm cassette	Megastar	LTO	Remaining space under drawers height	
			140x125x5 mm	88x88x3 mm	162x107x25 mm	112x112x32 mm	81x60x16 mm	102x68x20 mm	94x90x6 mm	100x100x25 mm	137x59x16 mm	105x102x22 mm		
46760	Kopenhagen	1 drawer	191	426	25	29	140	91	213	49	133	57	739 mm	
46761	Kopenhagen		308	641	46	46	190	133	318	76	182	86	739 mm	
46762	Kopenhagen		308	641	46	46	190	133	318	76	182	86	896 mm	
46763	Kopenhagen	2 drawers	357	895	51	67	248	175	445	86	266	100	1052 mm	
46760	Kopenhagen		382	851	49	57	279	182	426	99	266	114	591 mm	
46761	Kopenhagen		616	1283	91	91	380	266	637	152	365	171	591 mm	
46762	Kopenhagen	616	1283	91	91	380	266	637	152	365	171	748 mm		
46763	Kopenhagen	3 drawers	714	1790	103	133	496	350	889	171	532	200	904 mm	
46760	Kopenhagen		573	1277	74	86	419	274	638	148	399	171	443 mm	
46761	Kopenhagen		923	1924	137	137	570	399	955	228	547	257	443 mm	
46762	Kopenhagen	923	1924	137	137	570	399	955	228	547	257	600 mm		
46763	Kopenhagen	4 drawers	1072	2685	154	200	744	524	1334	257	798	299	756 mm	
46760	Kopenhagen		764	1702	99	114	559	365	851	198	532	228	295 mm	
46761	Kopenhagen		1231	2565	182	182	760	532	1273	304	730	342	295 mm	
46762	Kopenhagen	1231	2565	182	182	760	532	1273	304	730	342	452 mm		
46763	Kopenhagen	5 drawers	1429	3580	205	266	992	699	1778	342	1064	399	608 mm	
46760	Kopenhagen		955	2128	124	143	698	456	1064	247	665	285	147 mm	
46761	Kopenhagen		1539	3206	228	228	950	665	1591	380	912	428	147 mm	
46762	Kopenhagen	1539	3206	228	228	950	665	1591	380	912	428	304 mm		
46763	Kopenhagen	6 drawers	1786	4475	257	333	1240	874	2223	428	1330	499	460 mm	
46760	Kopenhagen		1146	2554	148	171	838	547	1277	296	798	342	-	
46761	Kopenhagen		1847	3848	274	274	1140	798	1910	456	1094	513	-	
46762	Kopenhagen	1847	3848	274	274	1140	798	1910	456	1094	513	156 mm		
46763	Kopenhagen	7 drawers	2143	5369	308	399	1488	1049	2668	513	1596	599	312 mm	
46760	Kopenhagen		-	-	-	-	-	-	-	-	-	-	-	-
46761	Kopenhagen		-	-	-	-	-	-	-	-	-	-	-	-
46762	Kopenhagen	8 drawers	2155	4489	319	319	1330	931	2228	532	1277	599	-	
46763	Kopenhagen		2500	6264	359	466	1736	1224	3112	599	1862	698	164 mm	
46760	Kopenhagen		-	-	-	-	-	-	-	-	-	-	-	-
46761	Kopenhagen	-	-	-	-	-	-	-	-	-	-	-	-	
46762	Kopenhagen	-	-	-	-	-	-	-	-	-	-	-	-	
46763	Kopenhagen	-	-	-	-	-	-	-	-	-	-	-	-	

Example of arrangement of 7 drawers in Kopenhagen model art. no. 46762



Model
Paris-Versailles



Security level: Class II according to EN 1143-1
Fire rating: Fire-protected inner safe according to EN 1047-1 S60DIS

Suitable for the storage of:
 office documents, office equipment
 valuables

Description
Paris-Versailles series - High security safes with inner safe with one-hour protection from fire S 60 DIS.

Body: multi-walled body (52 mm thick)
Door: multi-walled door construction (109 mm thick)
Locking: 4-way locking bolt system - incl. overlapping profile on the hinge side

Standard option
Lock: high security key lock I class VdS with two keys (145 mm)
Boltwork handle: handle, protruding 60 mm
Hinges: external
Door opening angle: 180°
Mounting holes: 2 holes in the floor
Colour: RAL 7035 (light grey)

Art. No.	Model	Outer dimensions*			Inner dimensions			Door light		Anchoring		Weight Kg	Drawers Number	Volume Liters
		Height mm	Width mm	Depth mm	Height mm	Width mm	Depth mm	Height mm	Width mm	Bottom number	Backwall number			
46800	Paris-Versailles	779	684	815	675	568	651	645	516	2	-	740	3	59
46801	Paris-Versailles	779	684	950	675	568	786	645	516	2	-	815	3	79
46802	Paris-Versailles	1079	684	815	975	568	651	945	516	2	-	880	3	59
46803	Paris-Versailles	1079	684	950	975	568	786	945	516	2	-	950	3	79
46804	Paris-Versailles	1414	684	815	1310	568	651	1280	516	2	-	1220	2 x 3	118
46805	Paris-Versailles	1414	684	950	1310	568	786	1280	516	2	-	1290	2 x 3	159
46806	Paris-Versailles	1714	684	815	1610	568	651	1580	516	2	-	1315	2 x 3	118
46807	Paris-Versailles	1714	684	950	1610	568	786	1580	516	2	-	1395	2 x 3	159

* excluding hinges, handles and fittings



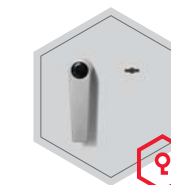
Body: multi-walled body 52 mm thick



Door: multi-walled door construction 109 mm thick

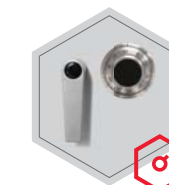
Closure options

Standard option

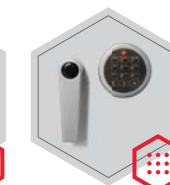


Key lock

Options available against surcharge



Mechanical code lock

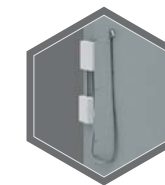


Electronic lock



Electronic lock with mechanical emergency

Accessories available against surcharge



Prepared for alarm system/ alarm system



All information concerning weight, color and dimensions are noncommittal and subject to errors and changes. Minor deviations are conditional on the production process. Technical changes, modifications and printing errors reserved. Safes may be top-heavy, during commissioning, please exercise appropriate caution in accordance with the installation guide. Pictograms are not technical description of the product.

Model
Helsinki



Security level: Class II according to EN 1143-1
Fire rating: Fire-protected safes according to EN 1047-1 S 120 DIS

The safe has been approved in accordance with EN 1047-1 in fire class 120 DIS. The certification was awarded by VdS they have fire and impact tests.

Suitable for the storage of:
 data media
 office documents, office equipment

Description
Series Helsinki - the safes with two-hour protection from fire S 120 DIS.

Body: multi-walled body (101 mm thick)
Door: multi-walled door construction (173 mm thick)
Locking: 4-way locking bolt system

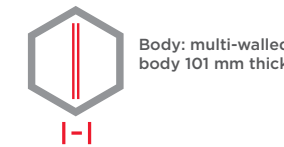
Standard option
Lock: high security key lock I class VdS with two keys (145 mm)
Boltwork handle: handle, protruding 60 mm
Mounting holes: 2 holes in the floor
Colour: RAL 7035 (light grey)



Model
Helsinki

Art. No.	Model	Outer dimensions*			Inner dimensions			Door light		Anchoring		Weight	Shelves	Volume
		Height mm	Width mm	Depth mm	Height mm	Width mm	Depth mm	Height mm	Width mm	Bottom number	Backwall number	Kg	Number	Liters
46850	Helsinki	1143	714	662	887	478	388	887	478	2	-	453	2	164
46851	Helsinki	1143	800	730	887	564	456	887	564	2	-	524	2	228
46852	Helsinki	1300	800	730	1044	564	456	1044	564	2	-	585	3	268
46853	Helsinki	1456	886	798	1200	650	524	1200	650	2	-	740	4	408

* excluding hinges, handles and fittings



Closure options

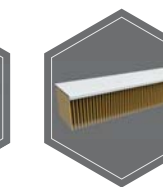
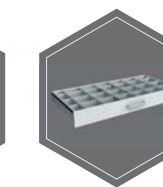
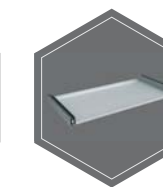
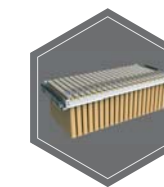
Standard option



Options available against surcharge

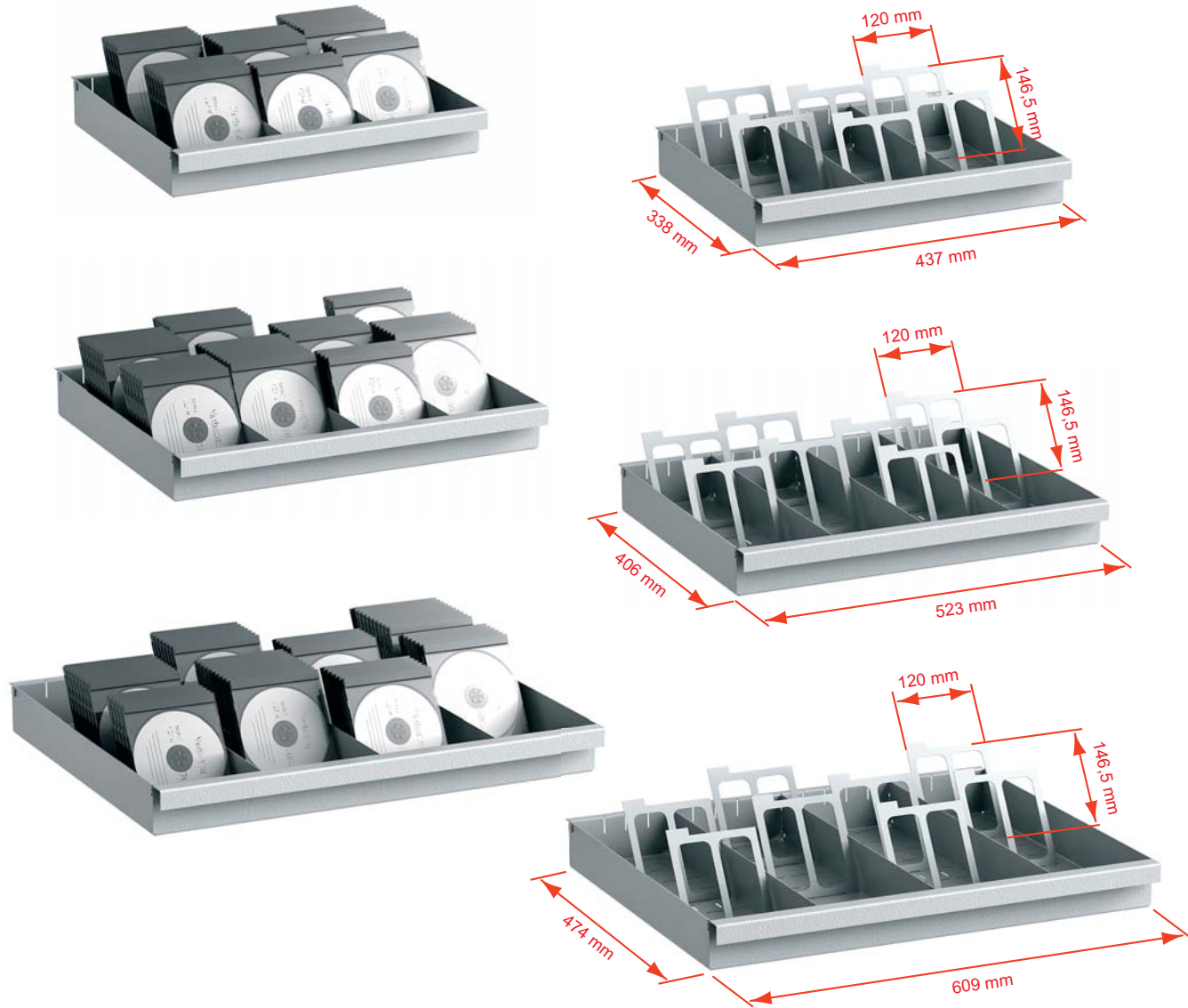


Accessories available against surcharge



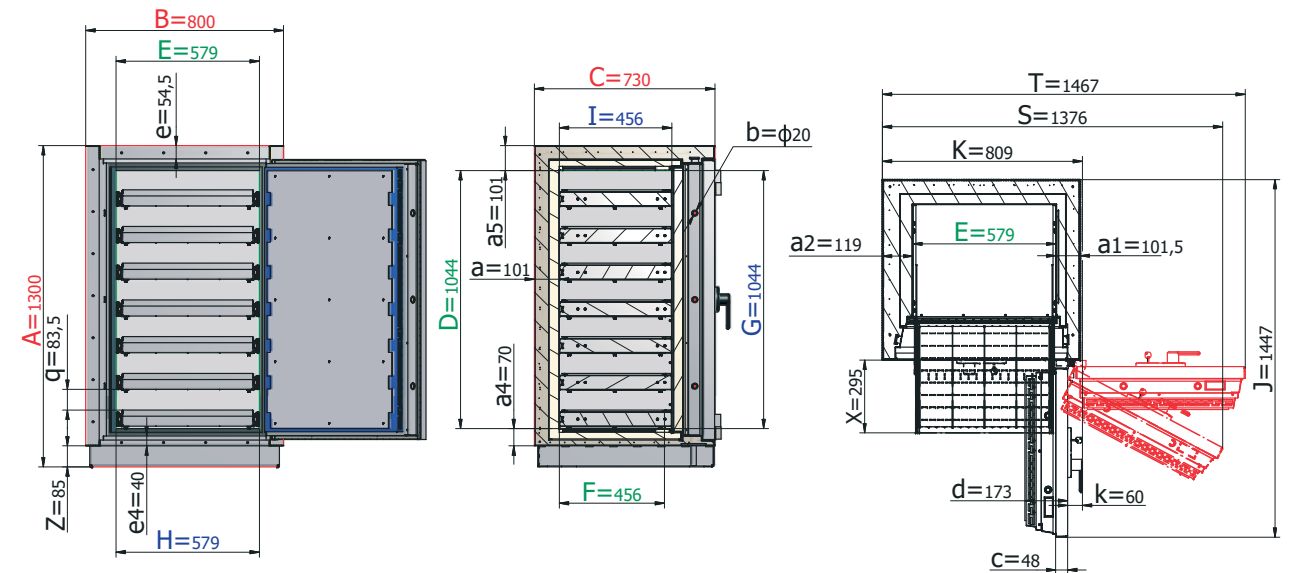
All information concerning weight, color and dimensions are noncommittal and subject to errors and changes. Minor deviations are conditional on the production process. Technical changes, modifications and printing errors reserved. Safes may be top-heavy, during commissioning, please exercise appropriate caution in accordance with the installation guide. Pictograms are not technical description of the product.

Drawer types used in Helsinki model



Art. No.	Model	Drawer number	CD-ROM	Diskette 3,5"	Streamer Tape	Streamer Tape DLT	Giga Tape 4	Giga Tape 8	Optical disc 3,5"	Microfilm cassette	Megastar	LTO	Remaining space under drawers height	
			140x125x5 mm	88x88x3 mm	162x107x25 mm	112x112x32 mm	81x60x16 mm	102x68x20 mm	94x90x6 mm	100x100x25 mm	137x59x16 mm	105x102x22 mm		
46850	Helsinki	1 drawer	191	426	25	29	140	91	213	49	133	57	739 mm	
46851	Helsinki		308	641	46	46	190	133	318	76	182	86	739 mm	
46852	Helsinki		308	641	46	46	190	133	318	76	182	86	896 mm	
46853	Helsinki	2 drawers	357	895	51	67	248	175	445	86	266	100	1052 mm	
46850	Helsinki		382	851	49	57	279	182	426	99	266	114	591 mm	
46851	Helsinki		616	1283	91	91	380	266	637	152	365	171	591 mm	
46852	Helsinki	3 drawers	616	1283	91	91	380	266	637	152	365	171	748 mm	
46853	Helsinki		714	1790	103	133	496	350	889	171	532	200	904 mm	
46850	Helsinki		573	1277	74	86	419	274	638	148	399	171	443 mm	
46851	Helsinki	4 drawers	923	1924	137	137	570	399	955	228	547	257	443 mm	
46852	Helsinki		923	1924	137	137	570	399	955	228	547	257	600 mm	
46853	Helsinki		1072	2685	154	200	744	524	1334	257	798	299	756 mm	
46850	Helsinki	5 drawers	764	1702	99	114	559	365	851	198	532	228	295 mm	
46851	Helsinki		1231	2565	182	182	760	532	1273	304	730	342	295 mm	
46852	Helsinki		1231	2565	182	182	760	532	1273	304	730	342	452 mm	
46853	Helsinki	6 drawers	1429	3580	205	266	992	699	1778	342	1064	399	608 mm	
46850	Helsinki		955	2128	124	143	698	456	1064	247	665	285	147 mm	
46851	Helsinki		1539	3206	228	228	950	665	1591	380	912	428	147 mm	
46852	Helsinki	7 drawers	1539	3206	228	228	950	665	1591	380	912	428	304 mm	
46853	Helsinki		1786	4475	257	333	1240	874	2223	428	1330	499	460 mm	
46850	Helsinki		1146	2554	148	171	838	547	1277	296	798	342	-	
46851	Helsinki	8 drawers	1847	3848	274	274	1140	798	1910	456	1094	513	-	
46852	Helsinki		1847	3848	274	274	1140	798	1910	456	1094	513	156 mm	
46853	Helsinki		2143	5369	308	399	1488	1049	2668	513	1596	599	312 mm	
46850	Helsinki	9 drawers	-	-	-	-	-	-	-	-	-	-	-	
46851	Helsinki		-	-	-	-	-	-	-	-	-	-	-	-
46852	Helsinki		2155	4489	319	319	1330	931	2228	532	1277	599	-	
46853	Helsinki	10 drawers	2500	6264	359	466	1736	1224	3112	599	1862	698	164 mm	
46850	Helsinki		-	-	-	-	-	-	-	-	-	-	-	-
46851	Helsinki		-	-	-	-	-	-	-	-	-	-	-	-
46852	Helsinki	11 drawers	-	-	-	-	-	-	-	-	-	-	-	
46853	Helsinki		2858	7159	410	532	1984	1398	3557	684	2128	798	-	

Example of arrangement of 7 drawers in Helsinki model art. no. 46852



Model
Rom-Romagna



Security level: Class III according to EN 1143-1
Fire rating: Fire-protected inner safe according to EN 1047-1 S60DIS

- Suitable for the storage of:
- office documents, office equipment
 - valuables

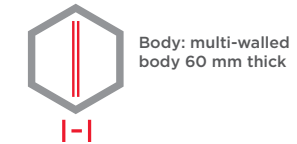
Description
 Rom-Romagna series - High security safes with inner safe with one-hour protection from fire S 60 DIS.

Body: multi-walled body (60 mm thick)
Door: multi-walled door construction (130 mm thick)
Locking: 4-way locking bolt system - incl. overlapping profile on the hinge side

Standard option
Lock: high security key lock I class VdS with two keys (170 mm)
Boltwork handle: handle, protruding 60 mm
Hinges: external
Door opening angle: 180°
Mounting holes: 2 holes in the floor
Colour: RAL 7035 (light grey)

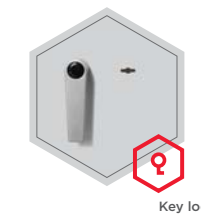
Art. No.	Model	Outer dimensions*			Inner dimensions			Door light		Anchoring		Weight Kg	Drawers Number	Volume Liters
		Height mm	Width mm	Depth mm	Height mm	Width mm	Depth mm	Height mm	Width mm	Bottom number	Backwall number			
46900	Rom-Romagna	795	700	853	675	580	647	645	522	2	-	740	3	59
46901	Rom-Romagna	795	700	988	675	580	782	645	522	2	-	815	3	79
46902	Rom-Romagna	1095	700	853	975	580	647	945	522	2	-	880	3	59
46903	Rom-Romagna	1095	700	988	975	580	782	945	522	2	-	950	3	79
46904	Rom-Romagna	1430	700	853	1310	580	647	1280	522	2	-	1220	2 x 3	118
46905	Rom-Romagna	1430	700	988	1310	580	782	1280	522	2	-	1290	2 x 3	159
46906	Rom-Romagna	1730	700	853	1610	580	647	1580	522	2	-	1315	2 x 3	118
46907	Rom-Romagna	1730	700	988	1610	580	782	1580	522	2	-	1395	2 x 3	159

* excluding hinges, handles and fittings



Closure options

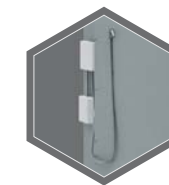
Standard option



Options available against surcharge



Accessories available against surcharge



All information concerning weight, color and dimensions are noncommittal and subject to errors and changes. Minor deviations are conditional on the production process. Technical changes, modifications and printing errors reserved. Safes may be top-heavy, during commissioning, please exercise appropriate caution in accordance with the installation guide. Pictograms are not technical description of the product.

Model
Rom - Lido



Security level: Class III according to EN 1143-1
Fire rating: Fire-protected inner safe according to EN 1047-1 S60P

Suitable for the storage of:
 • office documents, office equipment
 • valuables

Description
 Rom-Lido series - High security safes with inner safe with one-hour protection from fire S 60 P.

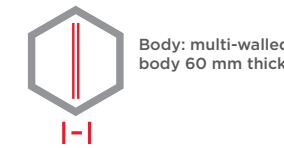
Body: multi-walled body (60 mm thick)
Door: multi-walled door construction (130 mm thick)
Locking: 4-way locking bolt system - incl. overlapping profile on the hinge side

Standard option
Lock: high security key lock I class VdS with two keys (170 mm)
Boltwork handle: handle, protruding 60 mm
Hinges: external
Door opening angle: 180°
Mounting holes: 1 hole in the floor
Colour: RAL 7035 (light grey)

Model
Rom - Lido

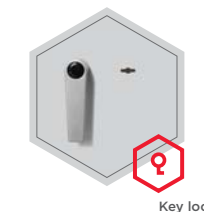
Art. No.	Model	Outer dimensions*			Inner dimensions			Door light		Anchoring		Weight	Shelves	Volume
		Height mm	Width mm	Depth mm	Height mm	Width mm	Depth mm	Height mm	Width mm	Bottom number	Backwall number	Kg	Number	Liters
44800	Rom-Lido	776	591	660	514	351	272	499	272	1	-	631	2	53
44801	Rom-Lido	936	591	660	674	351	272	659	272	1	-	770	2	70
44802	Rom-Lido	1298	832	704	1036	592	316	1021	513	1	-	1340	2	208
44803	Rom-Lido	1483	832	704	1221	592	316	1206	513	1	-	1485	3	245
44804	Rom-Lido	1668	832	704	1406	592	316	1391	513	1	-	1640	3	282

* excluding hinges, handles and fittings

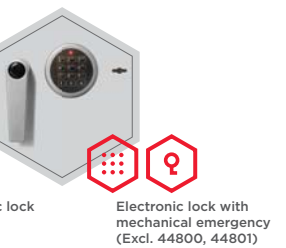


Closure options

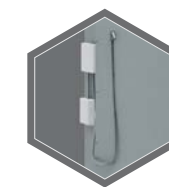
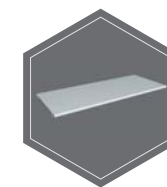
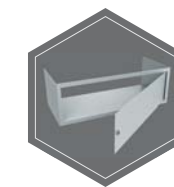
Standard option



Options available against surcharge



Accessories available against surcharge



All information concerning weight, color and dimensions are noncommittal and subject to errors and changes. Minor deviations are conditional on the production process. Technical changes, modifications and printing errors reserved. Safes may be top-heavy, during commissioning, please exercise appropriate caution in accordance with the installation guide. Pictograms are not technical description of the product.

The image depicts a sample of a fireproof safe - Prag 46107 with additional equipment.



**Additional equipment -
no extra charge / extra charge**



INTER SICHERHEITS SERVICE Sp. z o.o.

T +48 95 723 97 77 - 80
F +48 95 723 97 82
E biuro@iss.net.pl

I 66-400 Gorzów Wlkp.
ul. Kobylogórska 2
www.iss.net.pl